



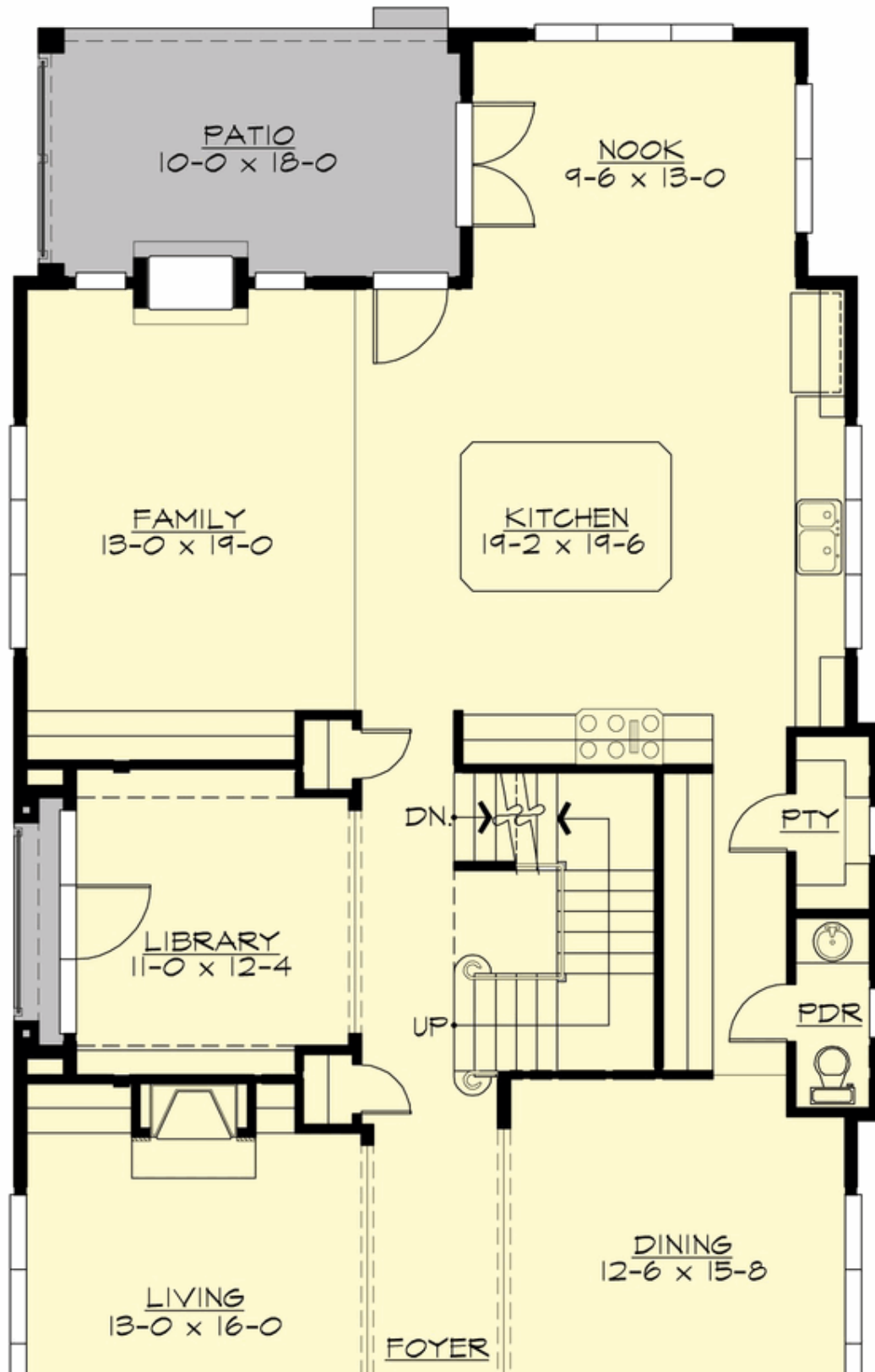
## GROVELAND - PLAN M4459A3SU-0FB

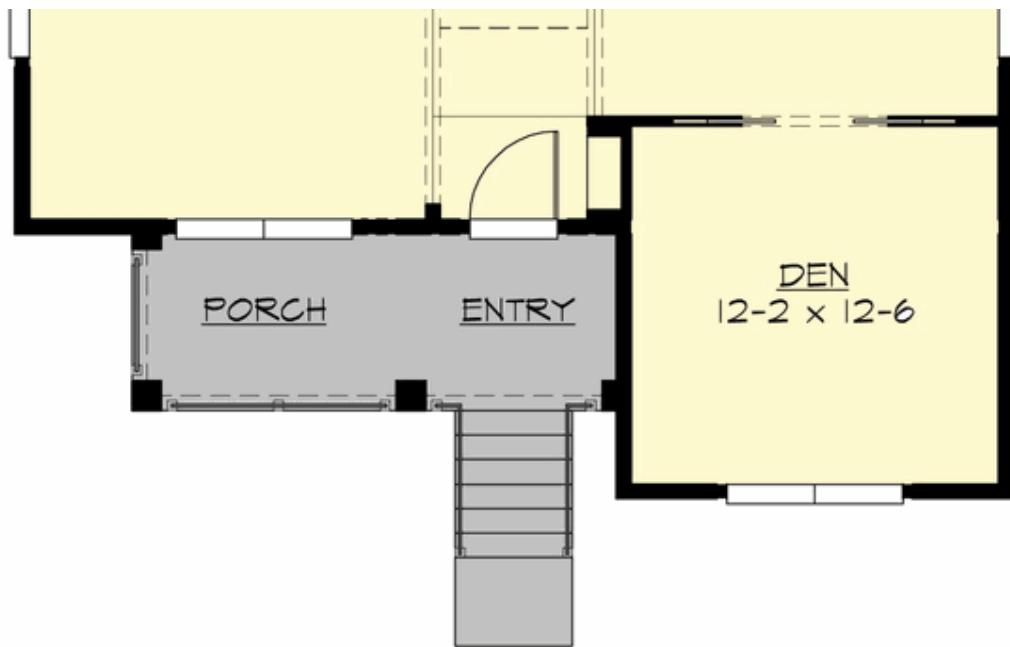
Total Area: 4539 sq. ft.  
Garage Area: 625 sq. ft.  
Garage Area: 625 sq. ft.  
Garage Size: 3  
Stories: 3  
Bedrooms: 5  
Full Baths: 5  
Half Baths: 1  
Width: 35'-0"  
Depth: 71'-0"  
Height: 25'-9"  
Foundation: Cellar Basement



## GROVELAND - PLAN M4459A3SU-0FB

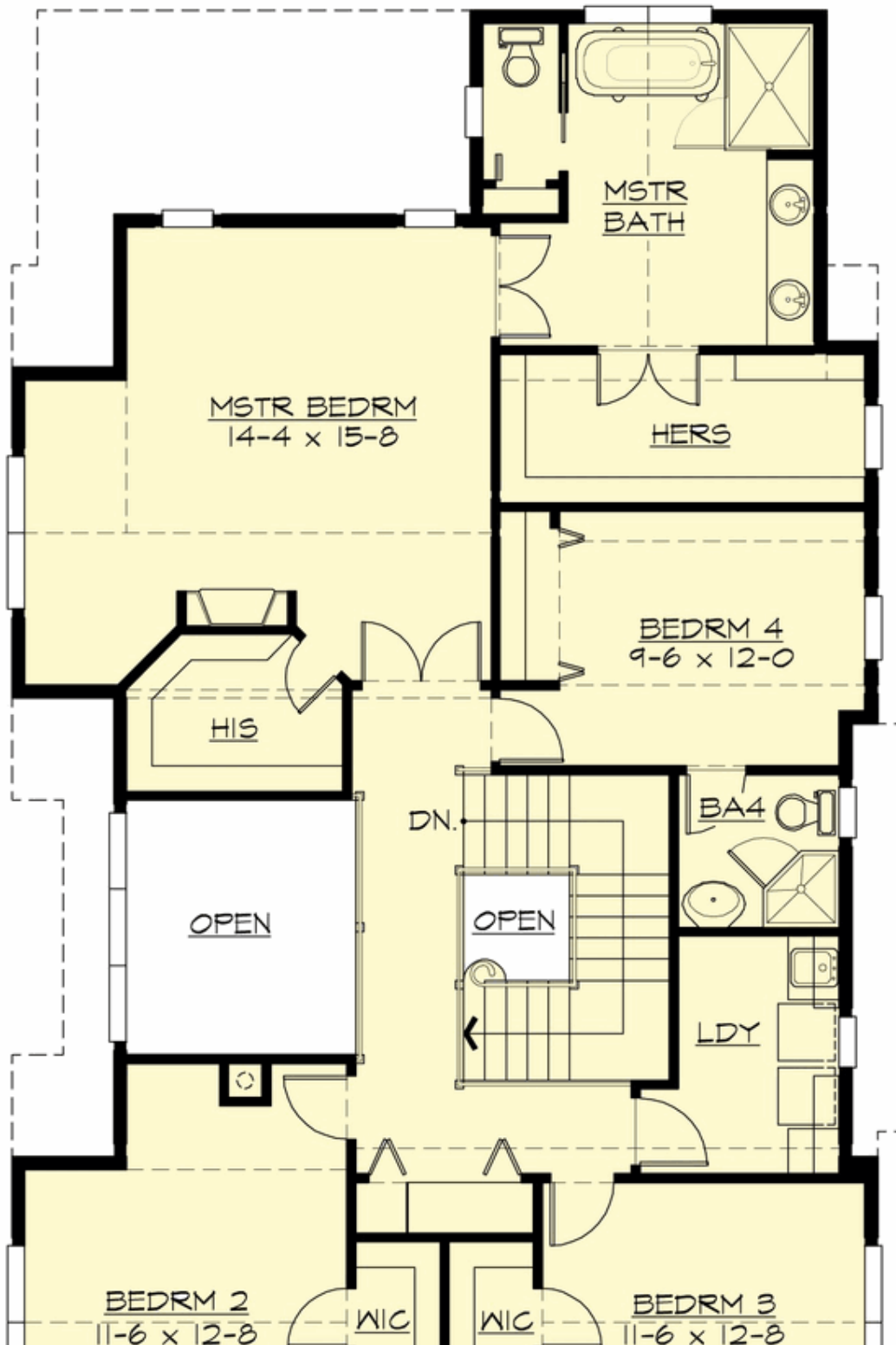
### MAIN FLOOR



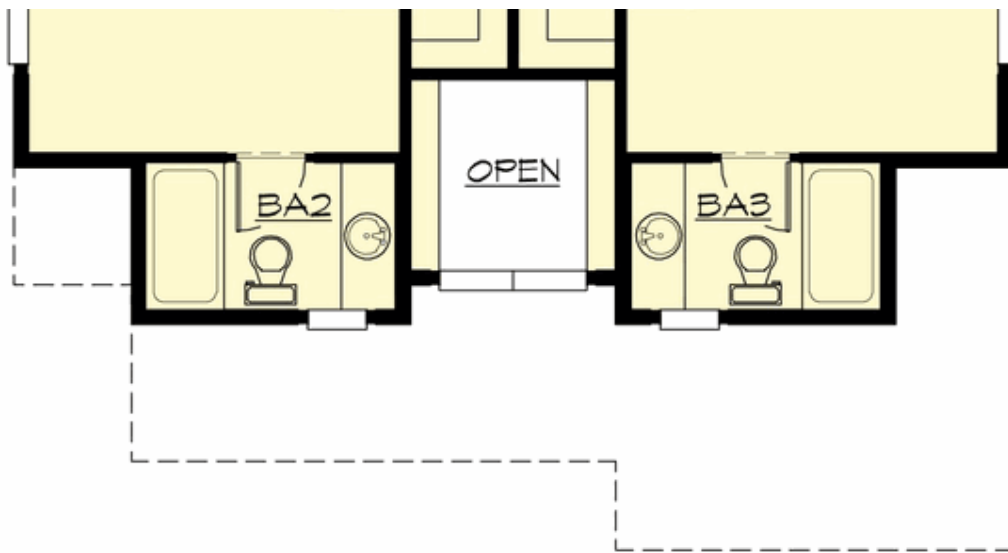


## GROVELAND - PLAN M4459A3SU-0FB

### UPPER FLOOR

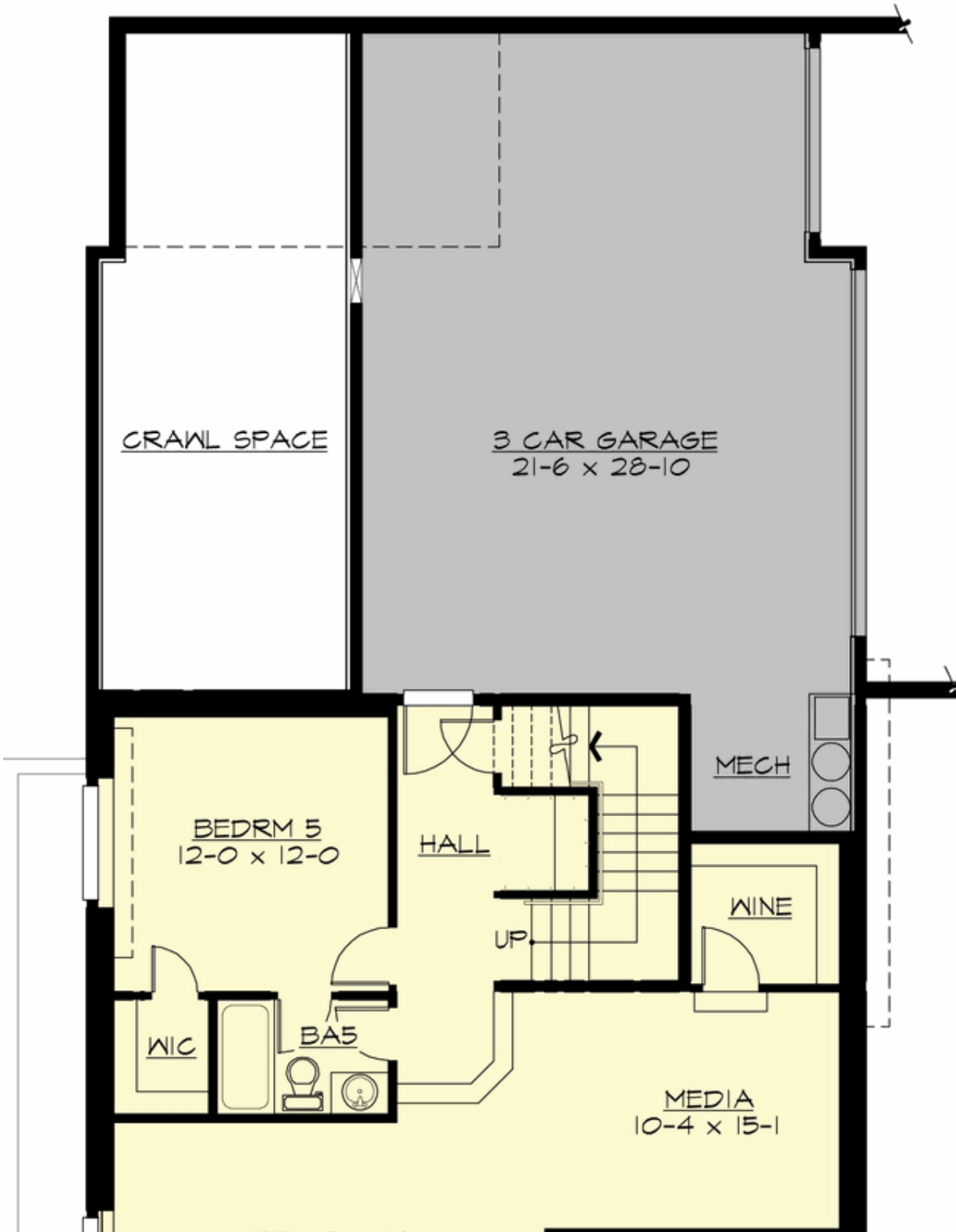


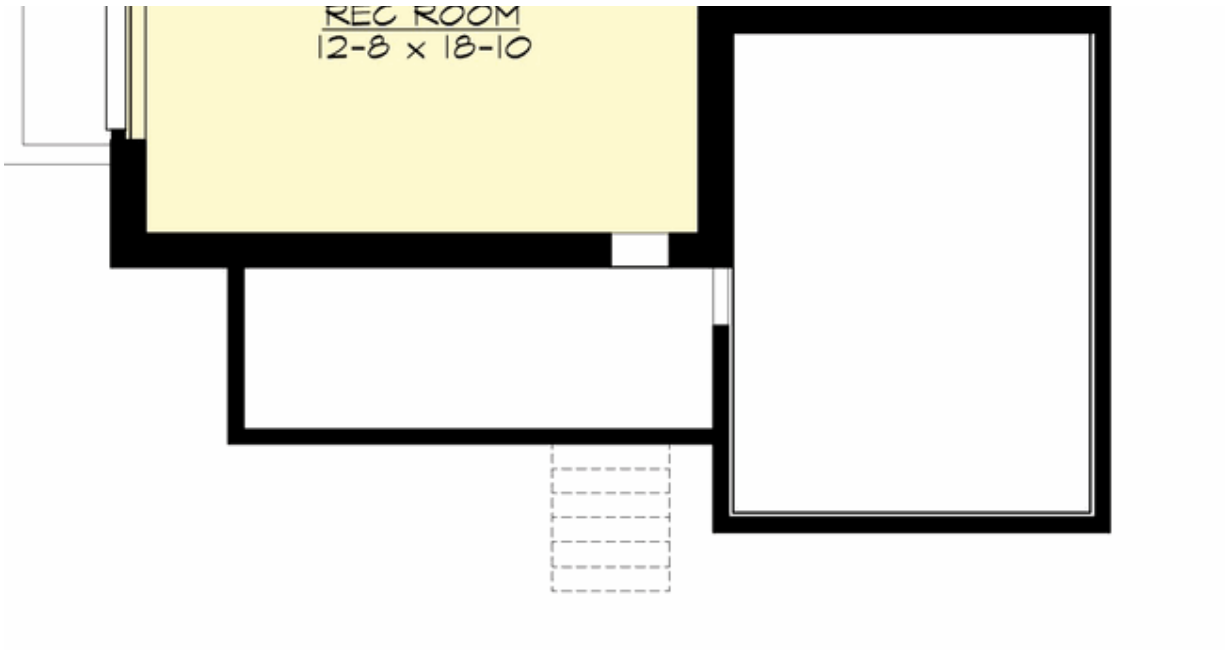
**COPYRIGHT NOTICE:** It is illegal to build this plan without a legally obtained set of prints. It is illegal to copy or redraw these plans. Violation of U.S. Copyright Laws are punishable with fines up to \$150,000. After the purchase of plans, changes may be made by a qualified professional.



**GROVELAND - PLAN M4459A3SU-0FB**

**LOWER FLOOR**







## GROVELAND - PLAN M4459A3SU-0FB

### PLAN DETAILS

#### Area Summary

Total Area:	4539 sq. ft.
Main Floor:	2026 sq. ft.
Upper Floor:	1577 sq. ft.
Lower Floor:	936 sq. ft.
Garage Floor:	625 sq. ft.

#### General Information

Stories:	3
Width:	35'-0"
Depth:	71'-0"
Height:	25'-9"

#### Architectural Style

Cape Cod  
Hampton  
Shingle

#### Number of Rooms

Bedrooms:	5
Full Baths:	5
Half Baths:	1

#### Garage

Garage Size:	3
Garage Door Location:	Side
Garage Type:	Under

#### Roof Pitches

Primary:	9:12
Secondary:	4:12

#### Wall Heights

Main:	10'-0"
Upper:	9'-0"
Lower:	9'-0"

#### Foundation Type

Cellar Basement

#### Roof Framing

Trusses

#### Floor Load

Live (lbs):	40 PSF
Dead (lbs):	10 PSF

#### Roof Load

Live (lbs):	25 PSF
Dead (lbs):	15 PSF
Wind:	85 MPH

#### Design Features

- Bonus Space @ Lower Floor
- Den/Office
- Front and Rear Porch
- Laundry Room @ Upper Floor
- Living & Family Room
- Master Bedroom @ Upper Floor Rear
- Narrow Lot