



BARRETT - PLAN M5258A2RTU-0DB

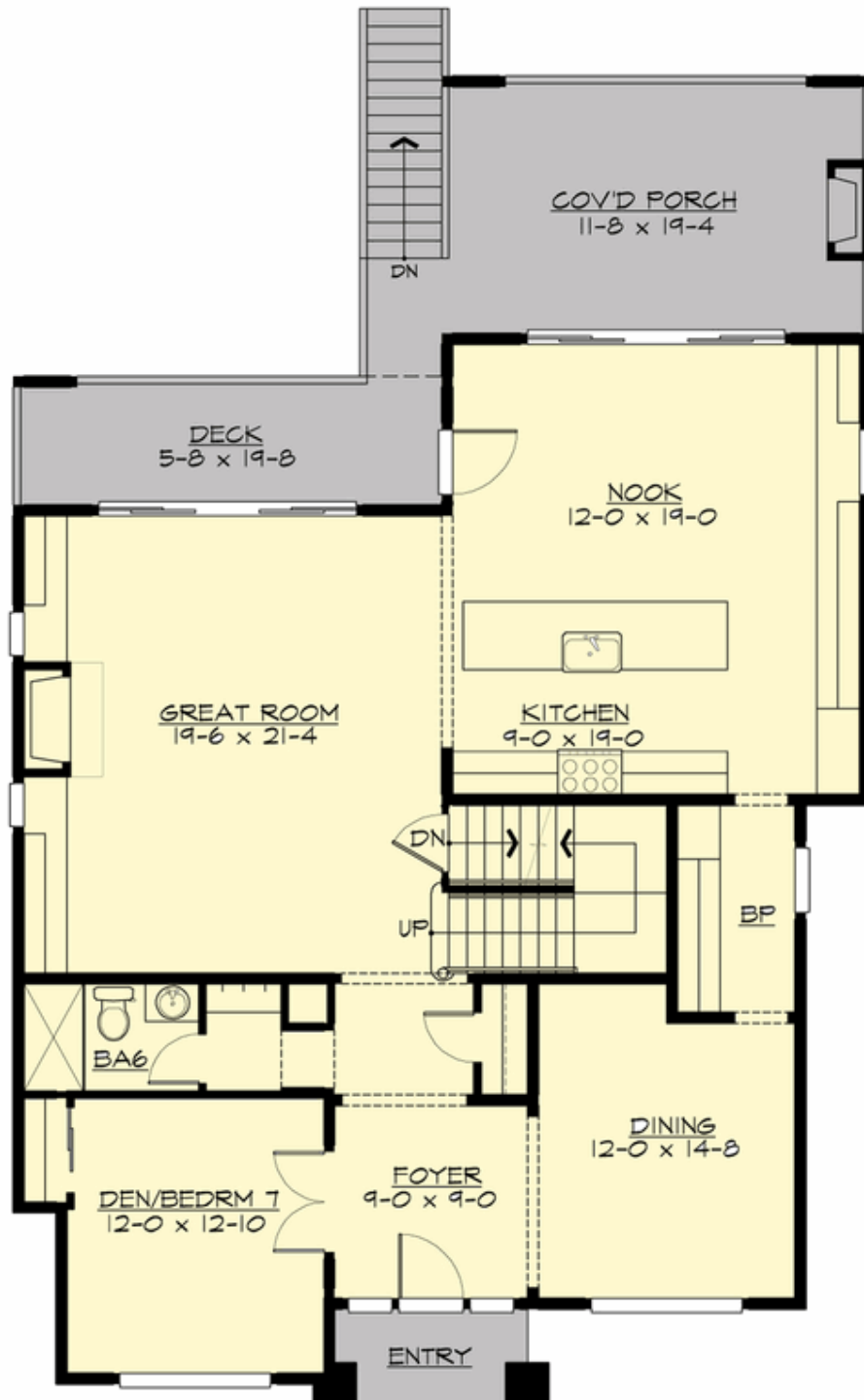
Total Area: 5258 sq. ft.
Garage Area: 563 sq. ft.
Garage Area: 563 sq. ft.
Garage Size: 2
Stories: 3
Bedrooms: 7
Full Baths: 7
Width: 40'-0"
Depth: 65'-0"
Height: 31'-10"
Foundation: Daylight Basement



Please Allow 2 Weeks For Delivery

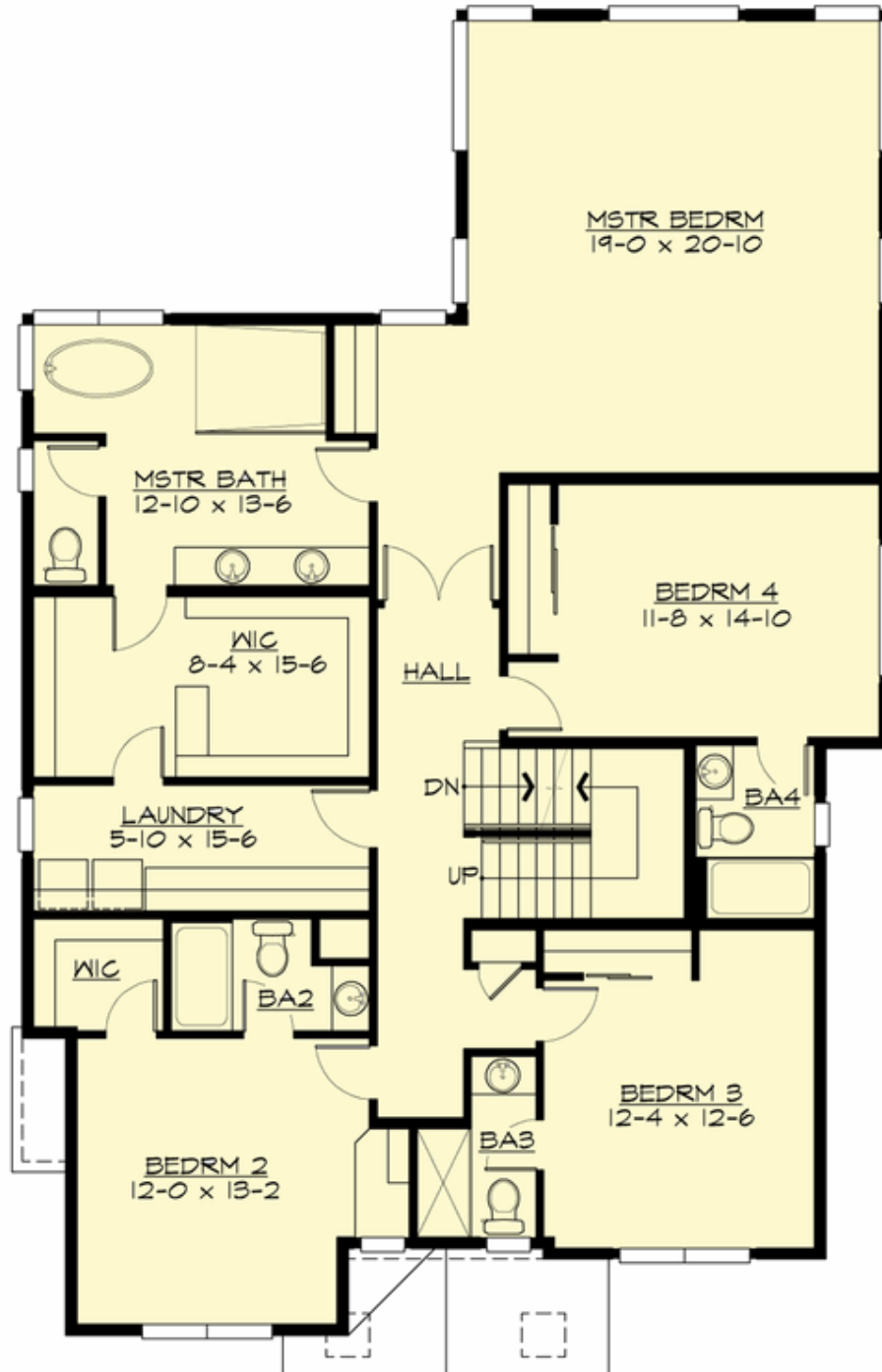
BARRETT - PLAN M5258A2RTU-0DB

MAIN FLOOR



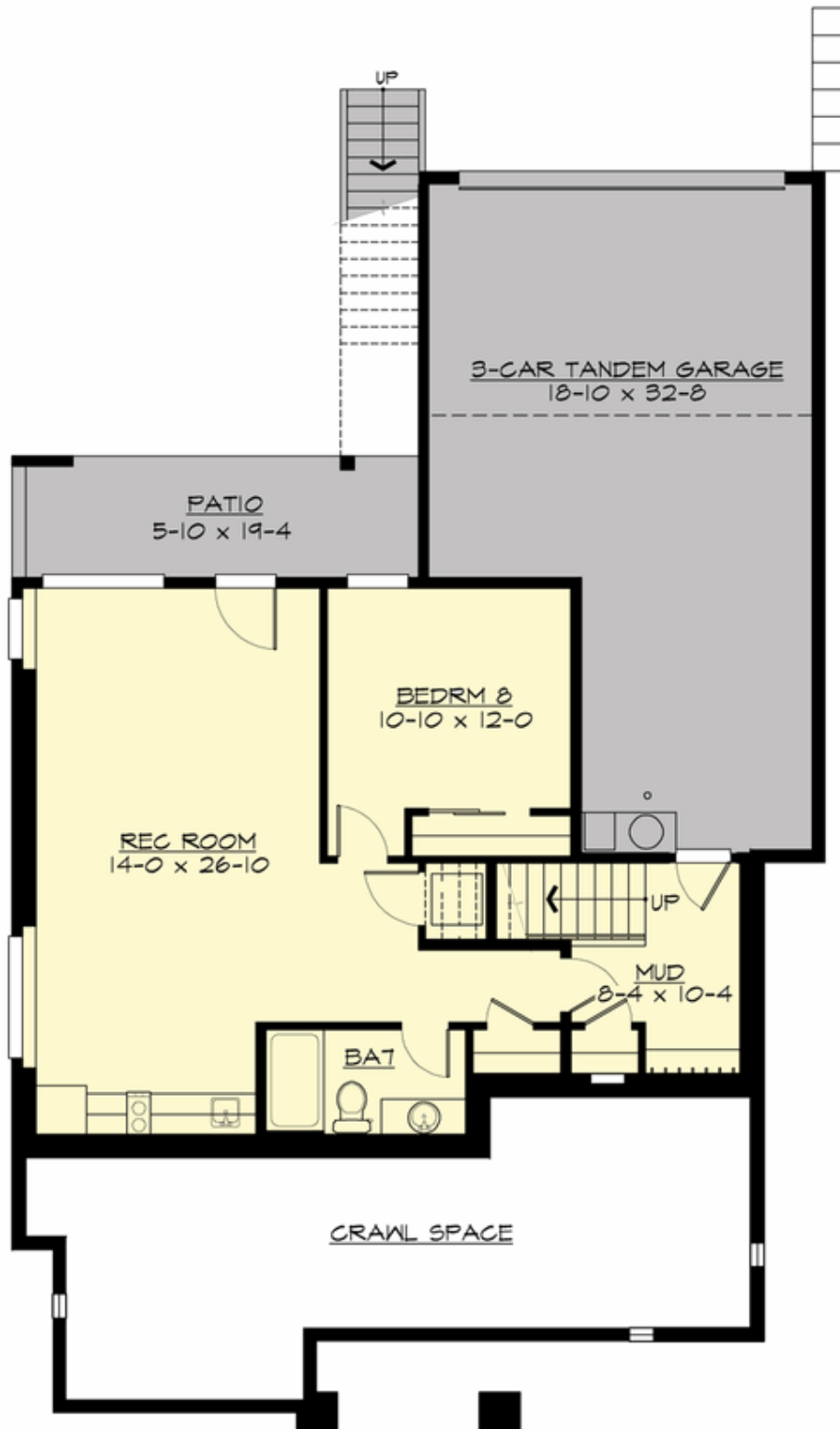
BARRETT - PLAN M5258A2RTU-0DB

UPPER FLOOR



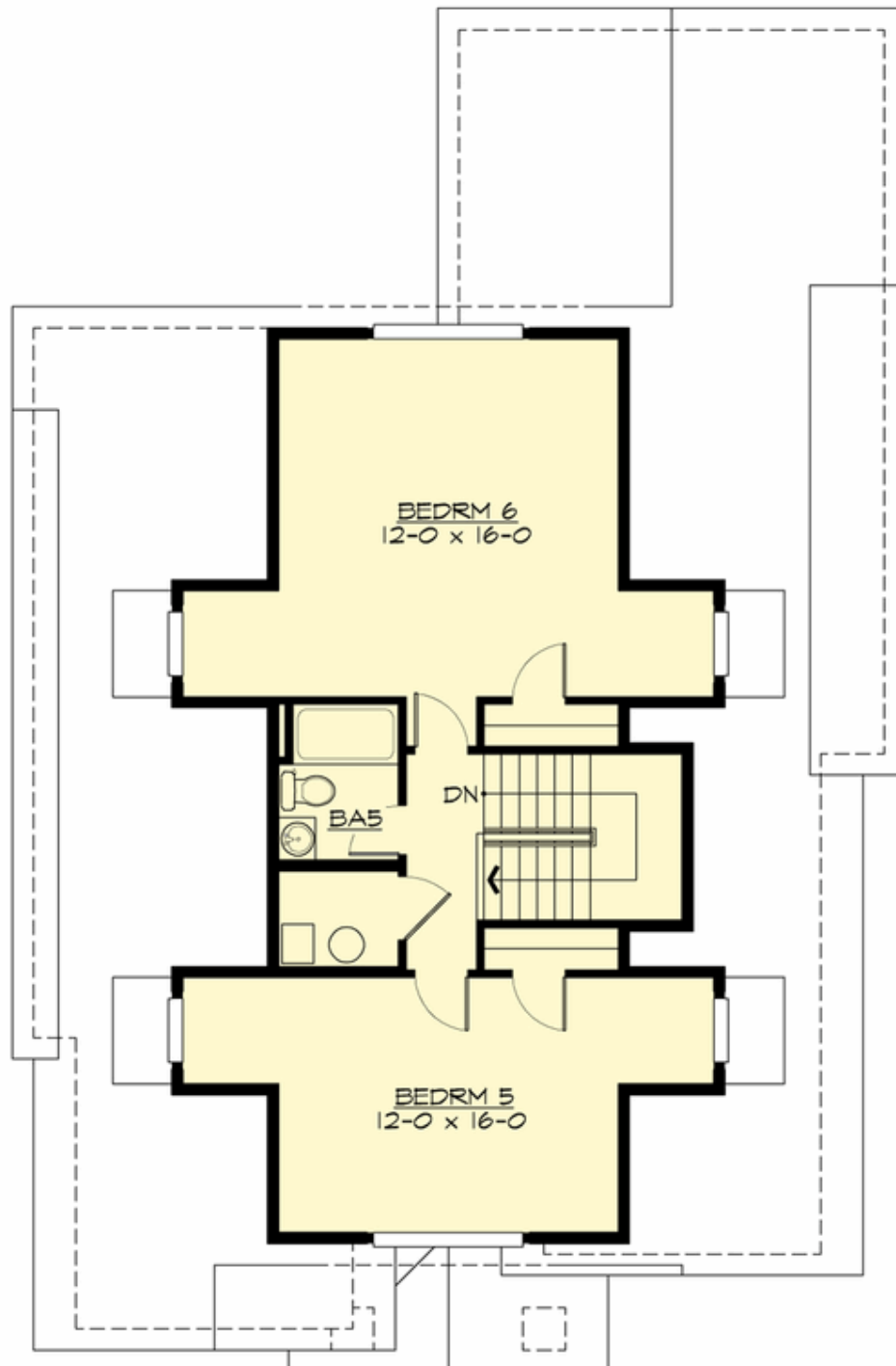
BARRETT - PLAN M5258A2RTU-0DB

LOWER FLOOR



BARRETT - PLAN M5258A2RTU-0DB

THIRD FLOOR





BARRETT - PLAN M5258A2RTU-0DB

PLAN DETAILS

Area Summary

Total Area:	5258 sq. ft.
Main Floor:	1626 sq. ft.
Upper Floor:	1975 sq. ft.
3rd Floor:	764 sq. ft.
Lower Floor:	893 sq. ft.
Garage Floor:	563 sq. ft.

General Information

Stories:	3
Width:	40'-0"
Depth:	65'-0"
Height:	31'-10"

Architectural Style

Craftsman
Northwest
Shingle

Number of Rooms

Bedrooms:	7
Full Baths:	7

Garage

Garage Size:	2
Garage Door Location:	Rear
Garage Type:	Under

Roof Pitches

Primary:	7:12
Secondary:	4:12

Wall Heights

Main:	10'-0"
Upper:	9'-0"
3rd Floor:	8'-0"
Lower:	9'-0"

Foundation Type

Daylight Basement

Roof Framing

Combination

Floor Load

Live (lbs):	40 PSF
Dead (lbs):	10 PSF

Roof Load

Live (lbs):	25 PSF
Dead (lbs):	15 PSF
Wind:	85 MPH

Design Features

- Bonus Space @ Lower Floor
- Den/Office
- Front and Rear Porch
- Great Room
- Laundry Room @ Upper Floor
- Master Bedroom @ Upper Floor Rear
- Narrow Lot
- View Lot - Rear