



## LOGANBERRY - PLAN M4235A3FU-0DB

Total Area: 4235 sq. ft.  
Garage Area: 825 sq. ft.  
Garage Area: 825 sq. ft.  
Garage Size: 3  
Stories: 3  
Bedrooms: 5  
Full Baths: 4  
Width: 46'-0"  
Depth: 66'-6"  
Height: 28'-0"  
Foundation: Daylight Basement

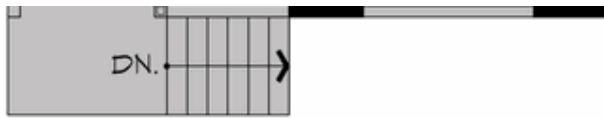


## LOGANBERRY - PLAN M4235A3FU-0DB

### MAIN FLOOR

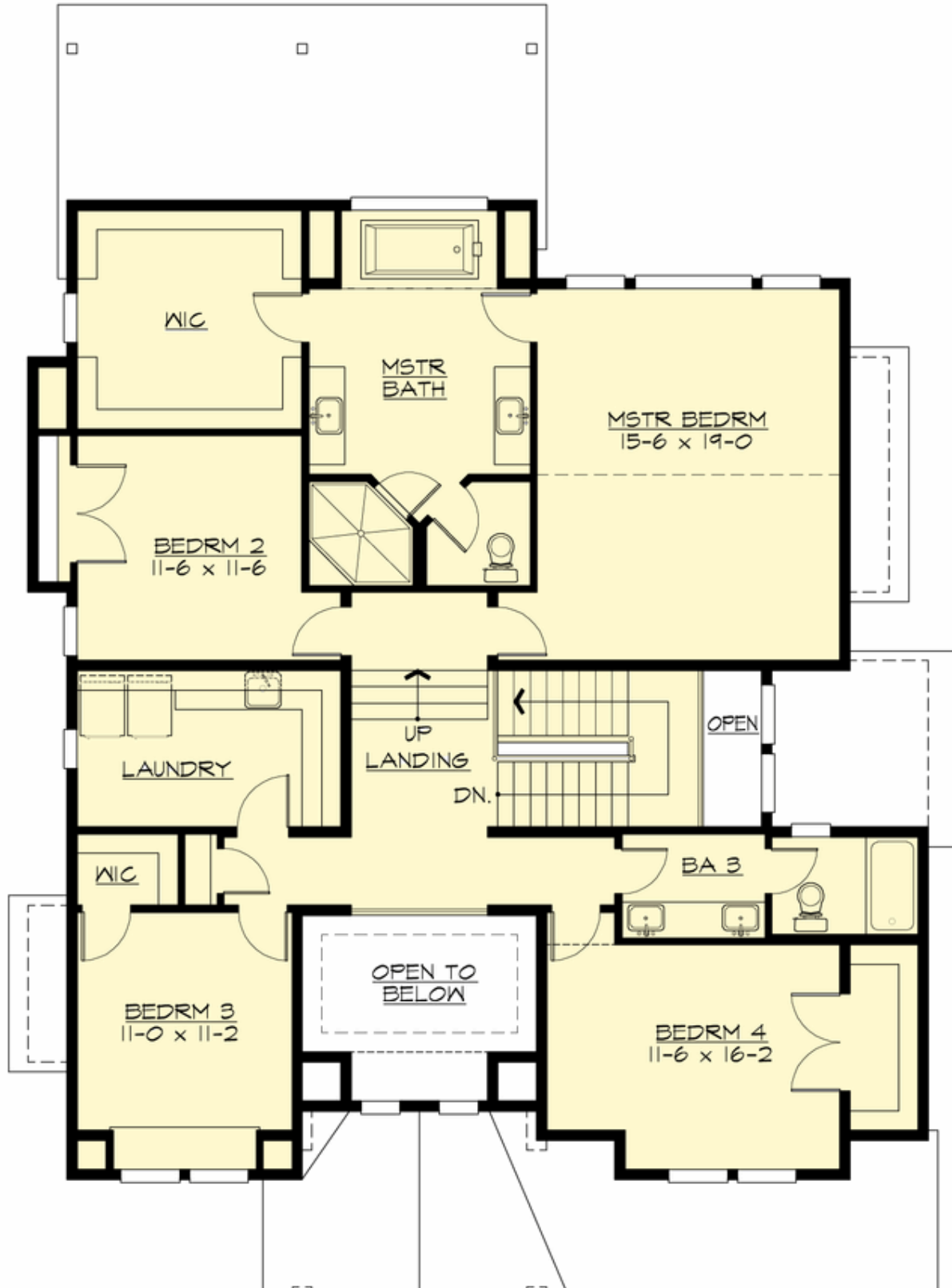


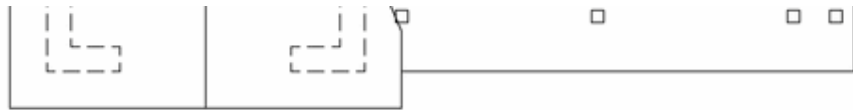
**COPYRIGHT NOTICE:** It is illegal to build this plan without a legally obtained set of prints. It is illegal to copy or redraw these plans. Violation of U.S. Copyright Laws are punishable with fines up to \$150,000. After the purchase of plans, changes may be made by a qualified professional.



## LOGANBERRY - PLAN M4235A3FU-0DB

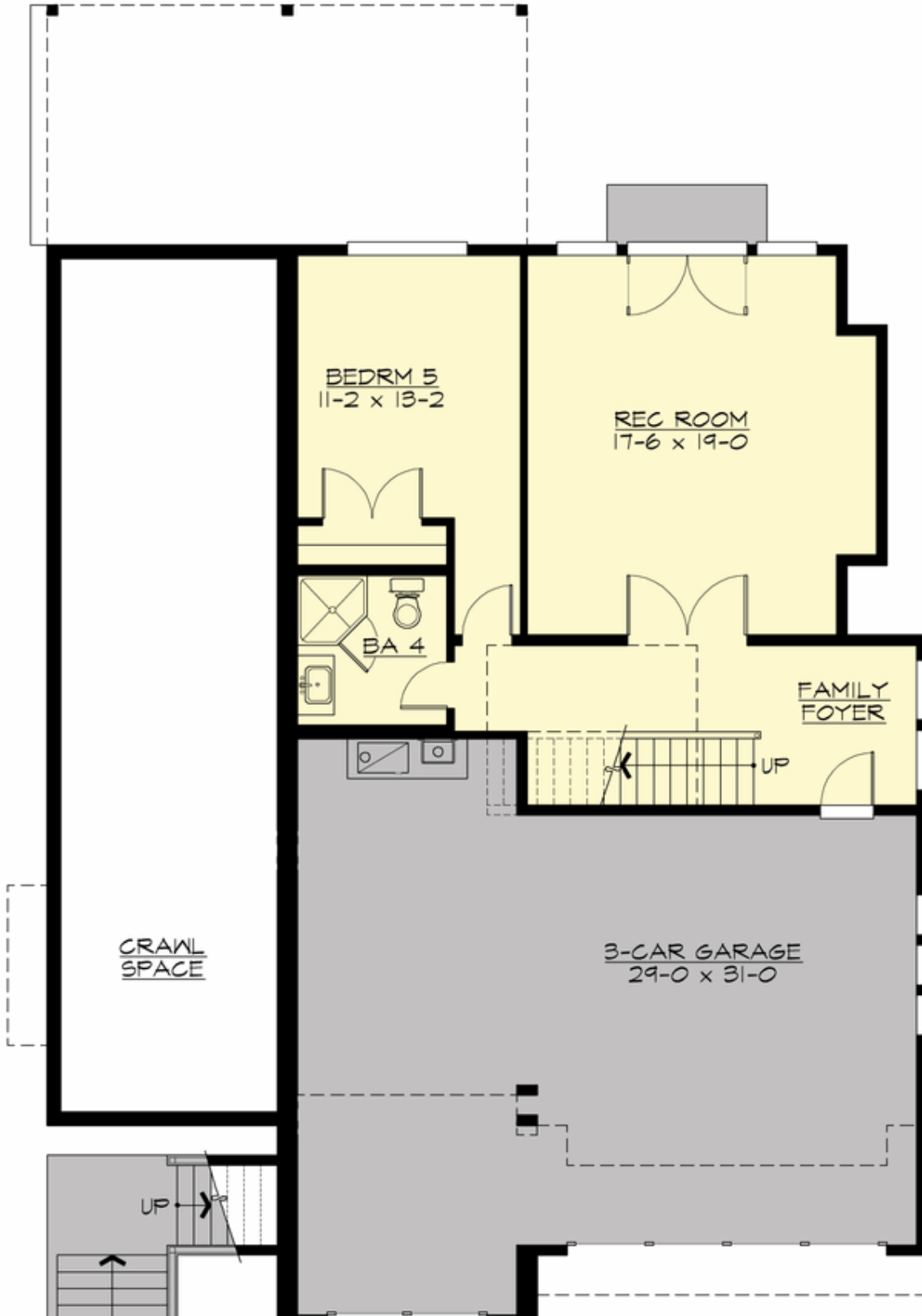
### UPPER FLOOR

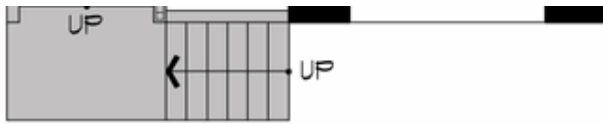




**LOGANBERRY - PLAN M4235A3FU-0DB**

**LOWER FLOOR**







## LOGANBERRY - PLAN M4235A3FU-0DB

### PLAN DETAILS

#### Area Summary

Total Area:	4235 sq. ft.
Main Floor:	1772 sq. ft.
Upper Floor:	1693 sq. ft.
Lower Floor:	770 sq. ft.
Garage Floor:	825 sq. ft.

#### General Information

Stories:	3
Width:	46'-0"
Depth:	66'-6"
Height:	28'-0"

#### Architectural Style

Country  
Craftsman  
Farmhouse

#### Number of Rooms

Bedrooms:	5
Full Baths:	4

#### Garage

Garage Size:	3
Garage Door Location:	Front
Garage Type:	Under

#### Roof Pitches

Primary:	8:12
Secondary:	4:12

#### Wall Heights

Main:	9'-0"
Upper:	8'-0"
Lower:	9'-0"

#### Foundation Type

Daylight Basement

#### Roof Framing

Trusses

#### Floor Load

Live (lbs):	40 PSF
Dead (lbs):	10 PSF

#### Roof Load

Live (lbs):	25 PSF
Dead (lbs):	15 PSF
Wind:	85 MPH

#### Design Features

- Bonus Space @ Lower Floor
- Den/Office
- Front and Rear Porch
- Great Room
- Laundry Room @ Upper Floor
- Master Bedroom @ Upper Floor Rear
- Narrow Lot
- View Lot - Rear