



## WESTWATER - PLAN M4736A3RTU-0DB

Total Area: 4736 sq. ft.  
Garage Area: 836 sq. ft.  
Garage Area: 836 sq. ft.  
Garage Size: 3  
Stories: 3  
Bedrooms: 5  
Full Baths: 6  
Width: 44'-0"  
Depth: 64'-0"  
Height: 20'-6"  
Foundation: Daylight Basement



## WESTWATER - PLAN M4736A3RTU-0DB

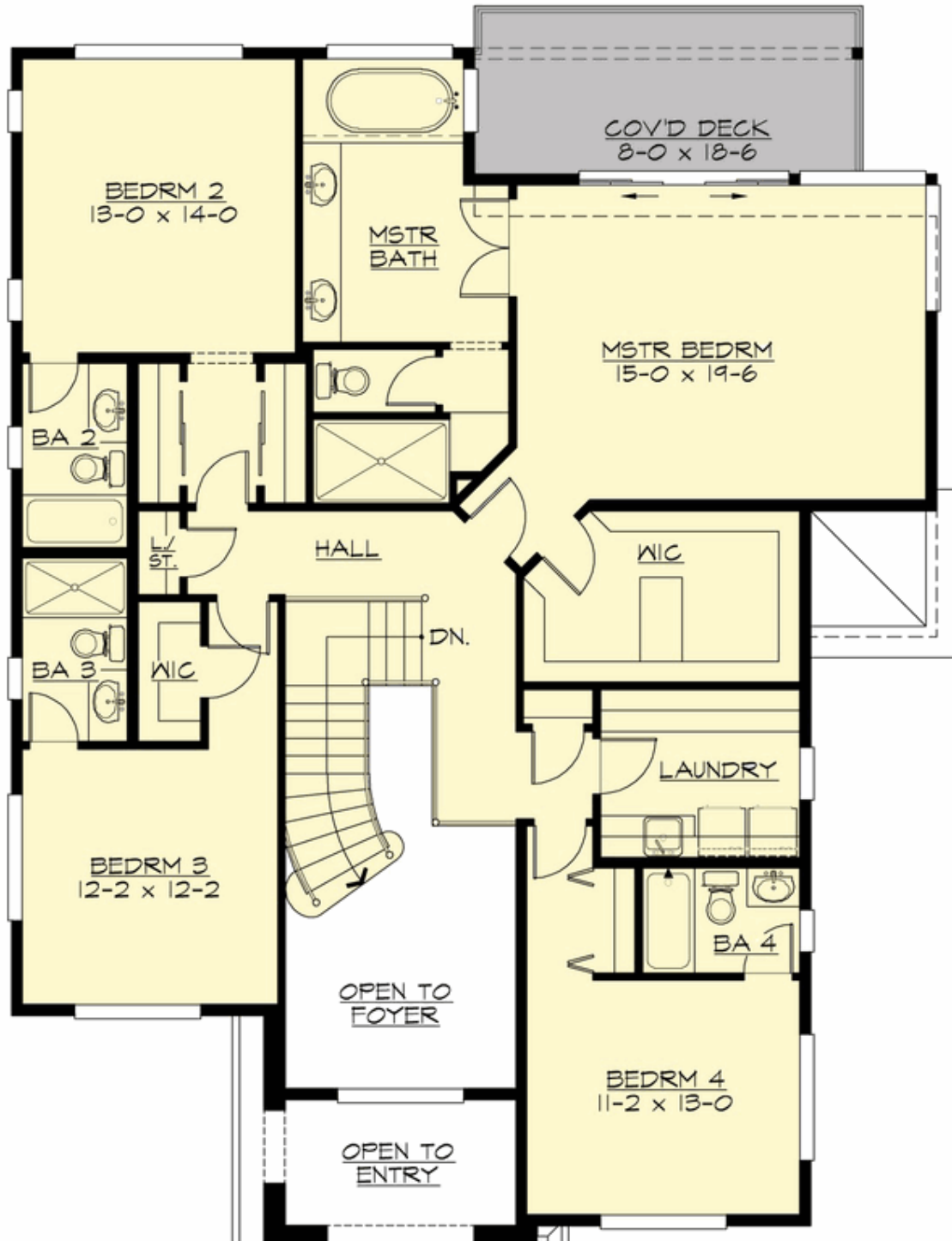
### MAIN FLOOR





## WESTWATER - PLAN M4736A3RTU-0DB

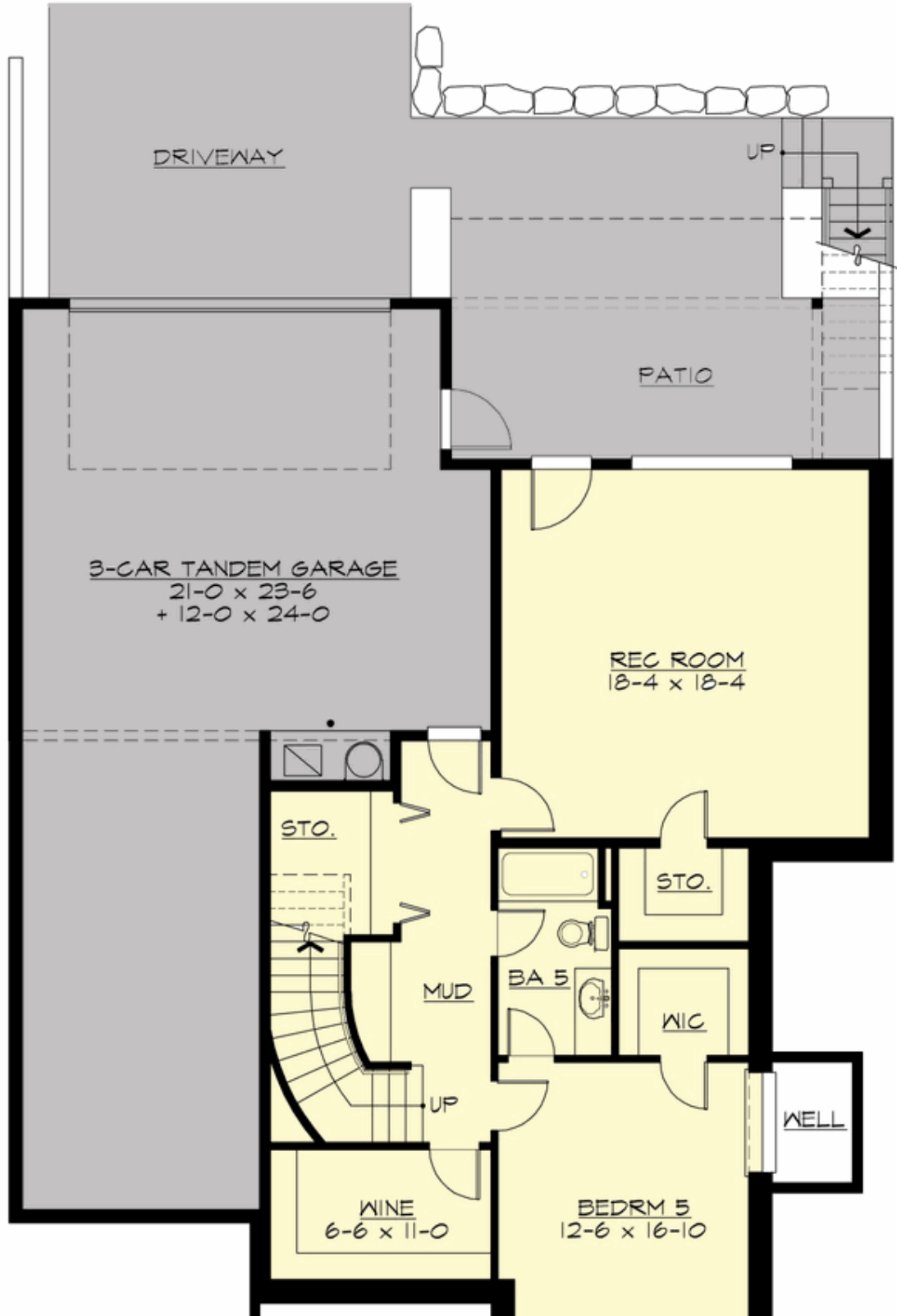
### UPPER FLOOR

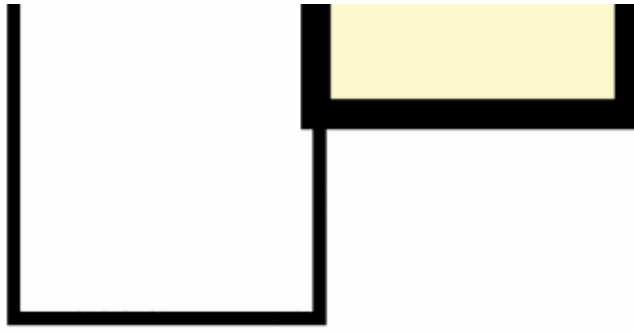




## WESTWATER - PLAN M4736A3RTU-0DB

### LOWER FLOOR







## WESTWATER - PLAN M4736A3RTU-0DB

### PLAN DETAILS

#### Area Summary

Total Area:	4736 sq. ft.
Main Floor:	1928 sq. ft.
Upper Floor:	1716 sq. ft.
Lower Floor:	1092 sq. ft.
Garage Floor:	836 sq. ft.

#### General Information

Stories:	3
Width:	44'-0"
Depth:	64'-0"
Height:	20'-6"

#### Architectural Style

Contemporary  
Modern  
Prairie

#### Number of Rooms

Bedrooms:	5
Full Baths:	6

#### Garage

Garage Size:	3
Garage Door Location:	Rear
Garage Type:	Tandem

#### Roof Pitches

Primary:	1:12
----------	------

#### Wall Heights

Main:	9'-0"
Upper:	8'-0"
Lower:	10'-0"

#### Foundation Type

Daylight Basement

#### Roof Framing

Stick

#### Floor Load

Live (lbs):	40 PSF
Dead (lbs):	10 PSF

#### Roof Load

Live (lbs):	25 PSF
Dead (lbs):	15 PSF
Wind:	85 MPH

#### Design Features

- Bonus Space @ Upper Floor & Lower Floor
- Den/Office
- Front and Rear Porch
- Great Room
- Laundry Room @ Upper Floor
- Master Bedroom @ Upper Floor Rear
- Narrow Lot
- View Lot - Rear