



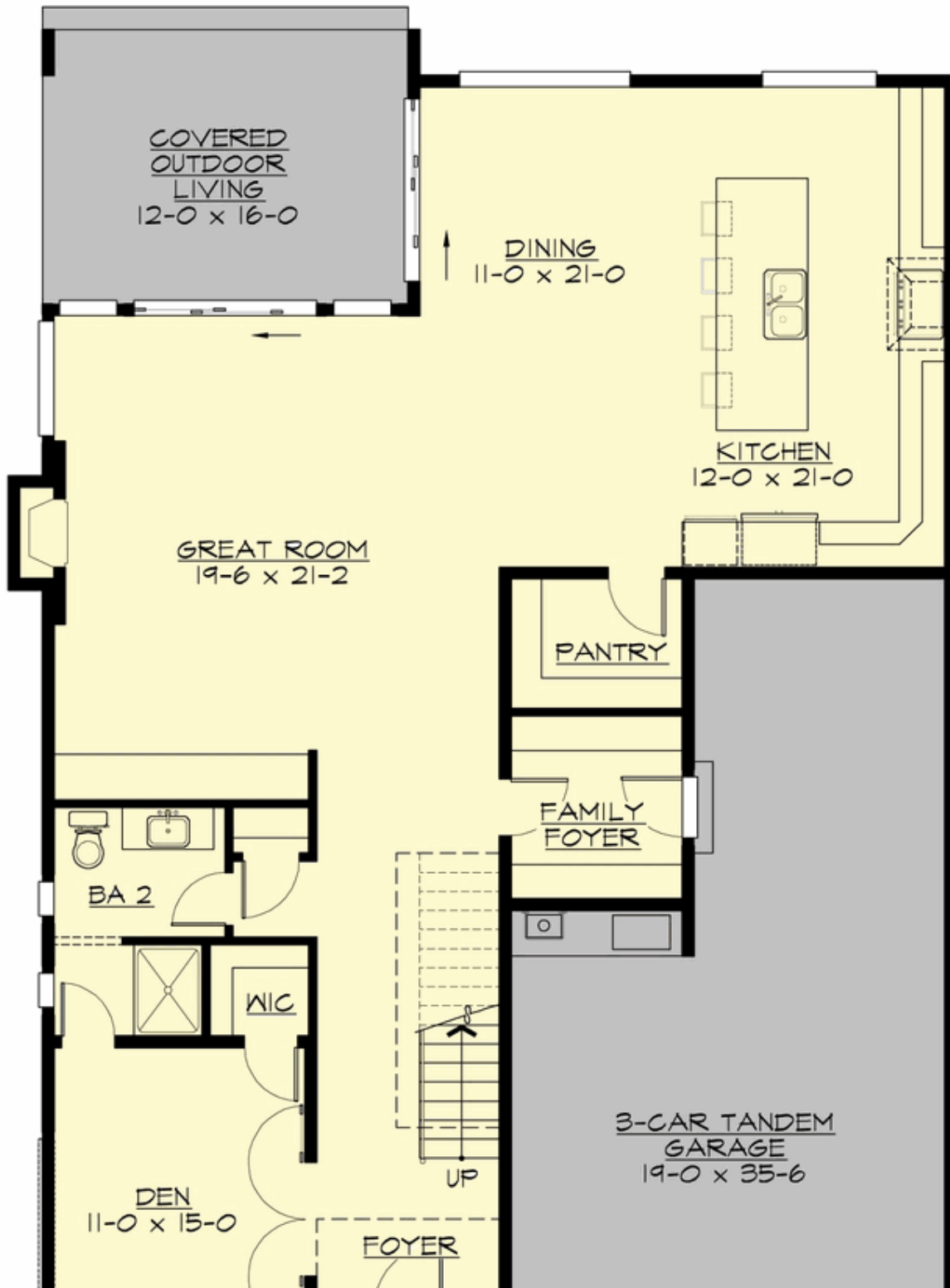
## LARKIN - PLAN M3395B3FT-0

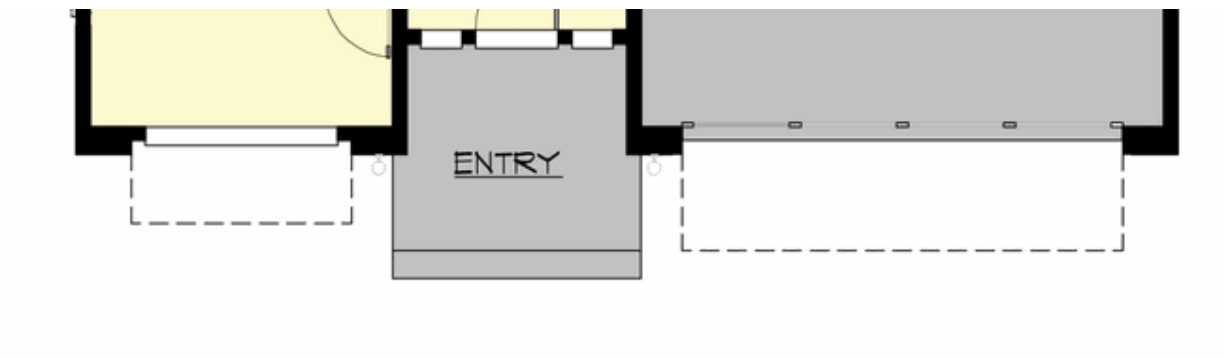
Total Area: 3422 sq. ft.  
Garage Area: 615 sq. ft.  
Garage Area: 615 sq. ft.  
Garage Size: 3  
Stories: 2  
Bedrooms: 4  
Full Baths: 3  
Width: 40'-0"  
Depth: 64'-0"  
Height: 26'-6"  
Foundation: Crawl Space



## LARKIN - PLAN M3395B3FT-0

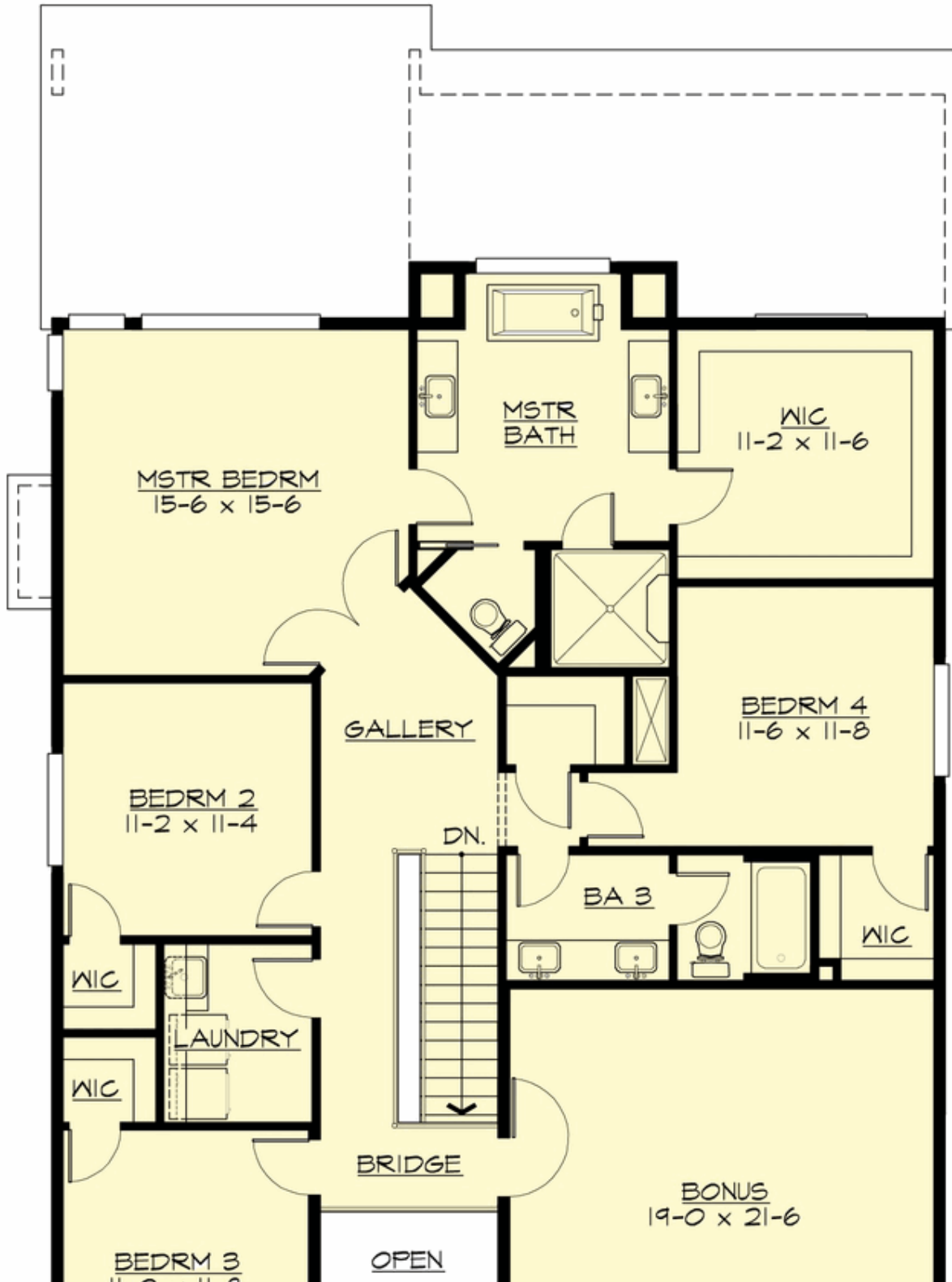
### MAIN FLOOR



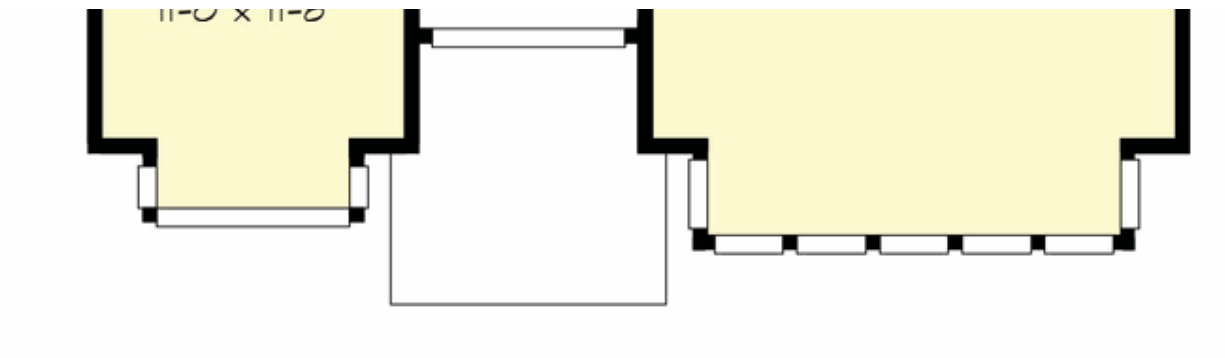


## LARKIN - PLAN M3395B3FT-0

### UPPER FLOOR



**COPYRIGHT NOTICE:** It is illegal to build this plan without a legally obtained set of prints. It is illegal to copy or redraw these plans. Violation of U.S. Copyright Laws are punishable with fines up to \$150,000. After the purchase of plans, changes may be made by a qualified professional.





## LARKIN - PLAN M3395B3FT-0

### PLAN DETAILS

#### Area Summary

Total Area:	3422 sq. ft.
Main Floor:	1518 sq. ft.
Upper Floor:	1904 sq. ft.
Garage Floor:	615 sq. ft.

#### General Information

Stories:	2
Width:	40'-0"
Depth:	64'-0"
Height:	26'-6"

#### Architectural Style

Contemporary  
Modern  
Prarie

#### Number of Rooms

Bedrooms:	4
Full Baths:	3

#### Garage

Garage Size:	3
Garage Door Location:	Front
Garage Type:	Tandem

#### Roof Pitches

Primary:	4:12
Secondary:	2:12

#### Wall Heights

Main:	9'-0"
Upper:	8'-0"

#### Foundation Type

Crawl Space

#### Roof Framing

Trusses

#### Floor Load

Live (lbs):	40 PSF
Dead (lbs):	10 PSF

#### Roof Load

Live (lbs):	25 PSF
Dead (lbs):	15 PSF
Wind:	85 MPH

#### Design Features

- Bonus Space @ Upper Floor
- Den/Office
- Great Room
- Laundry Room @ Upper Floor
- Master Bedroom @ Upper Floor Rear
- Narrow Lot
- Rear Porch
- View Lot - Rear