



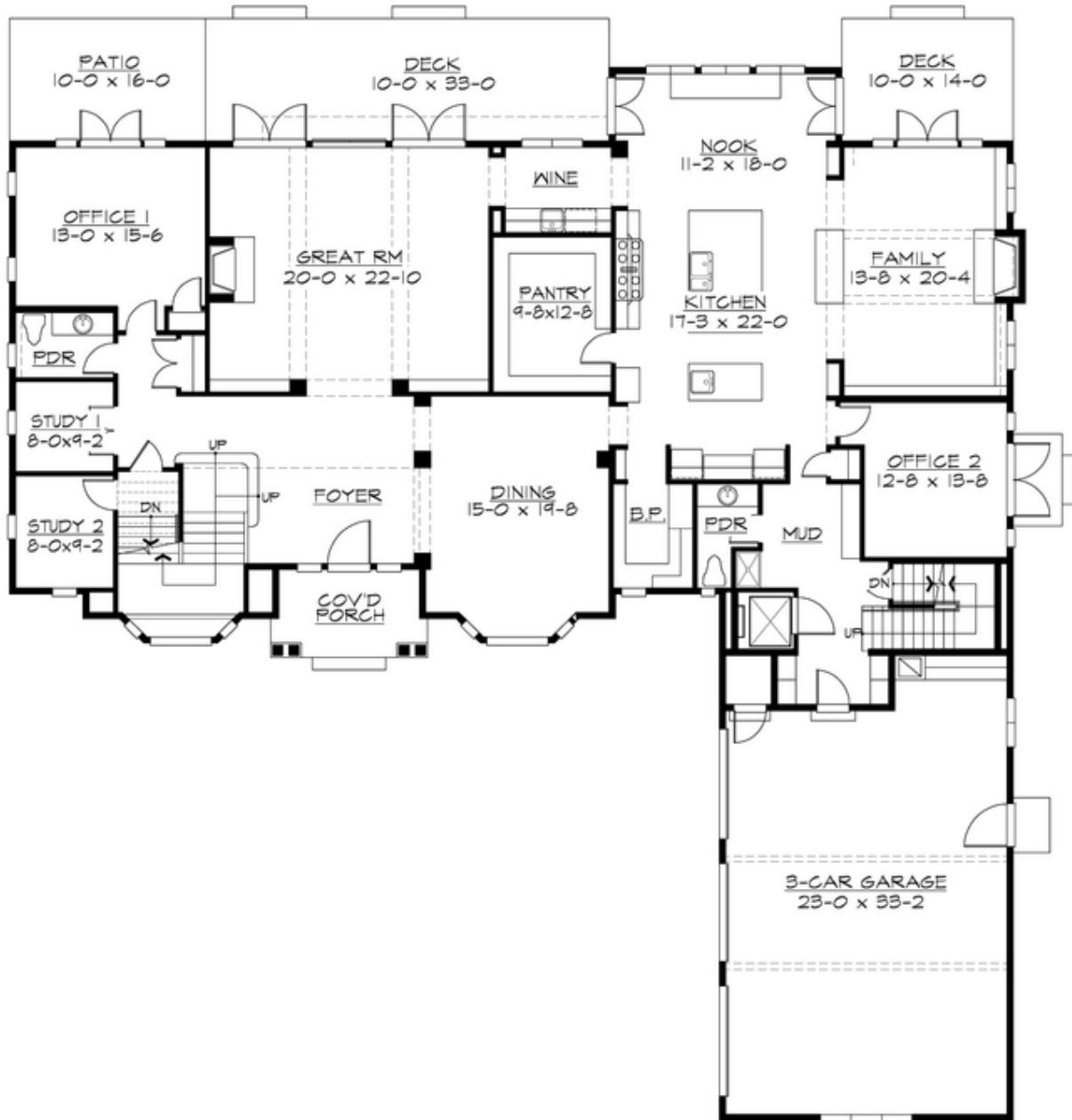
CAMBRIDGE - PLAN M6804A3S-0FB

Total Area: 6820 sq. ft.
Garage Area: 867 sq. ft.
Garage Area: 867 sq. ft.
Garage Size: 3
Stories: 3
Bedrooms: 5
Full Baths: 5
Half Baths: 3
Width: 82'-0"
Depth: 90'-0"
Height: 28'-0"
Foundation: Cellar Basement



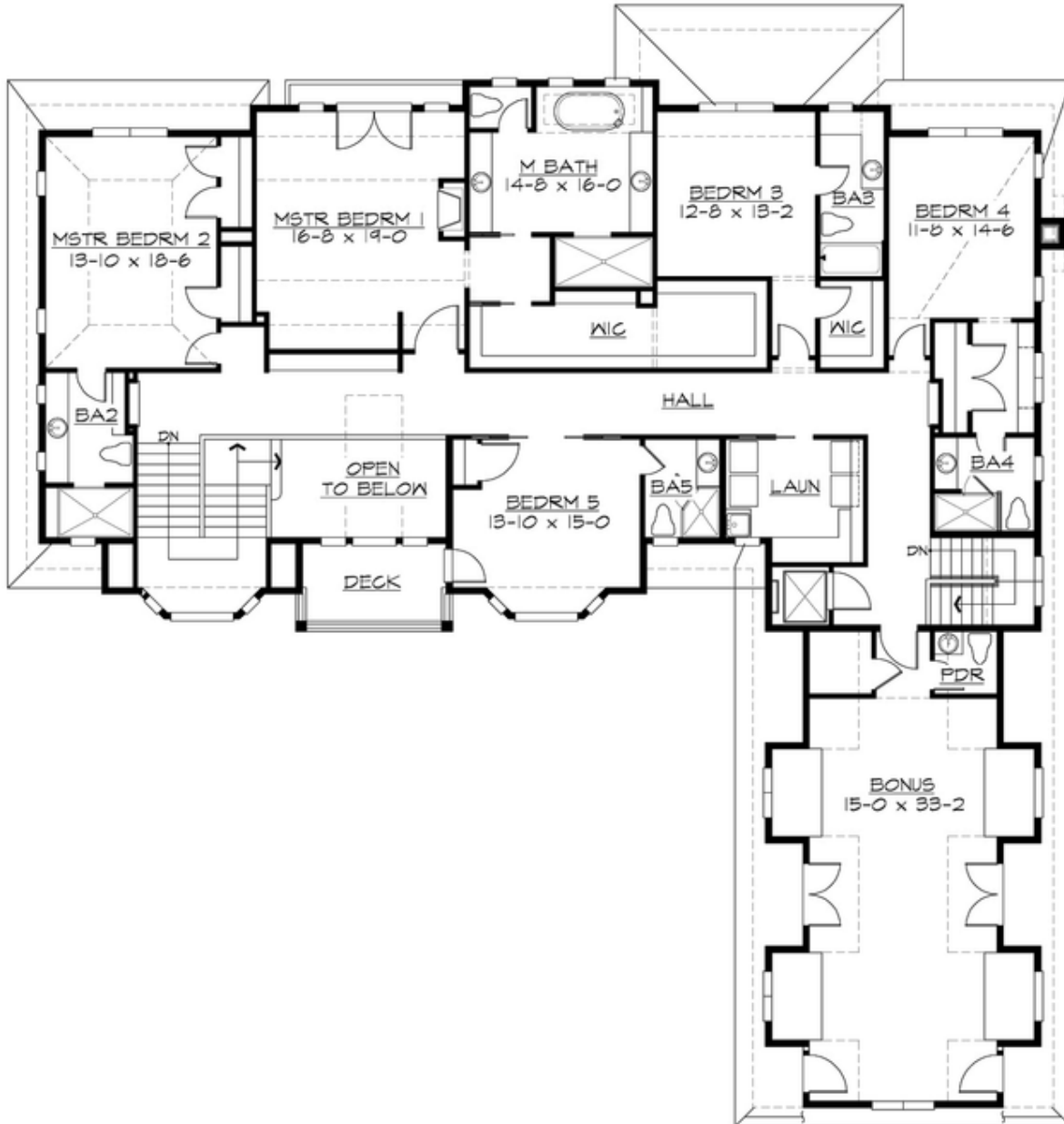
CAMBRIDGE - PLAN M6804A3S-0FB

MAIN FLOOR



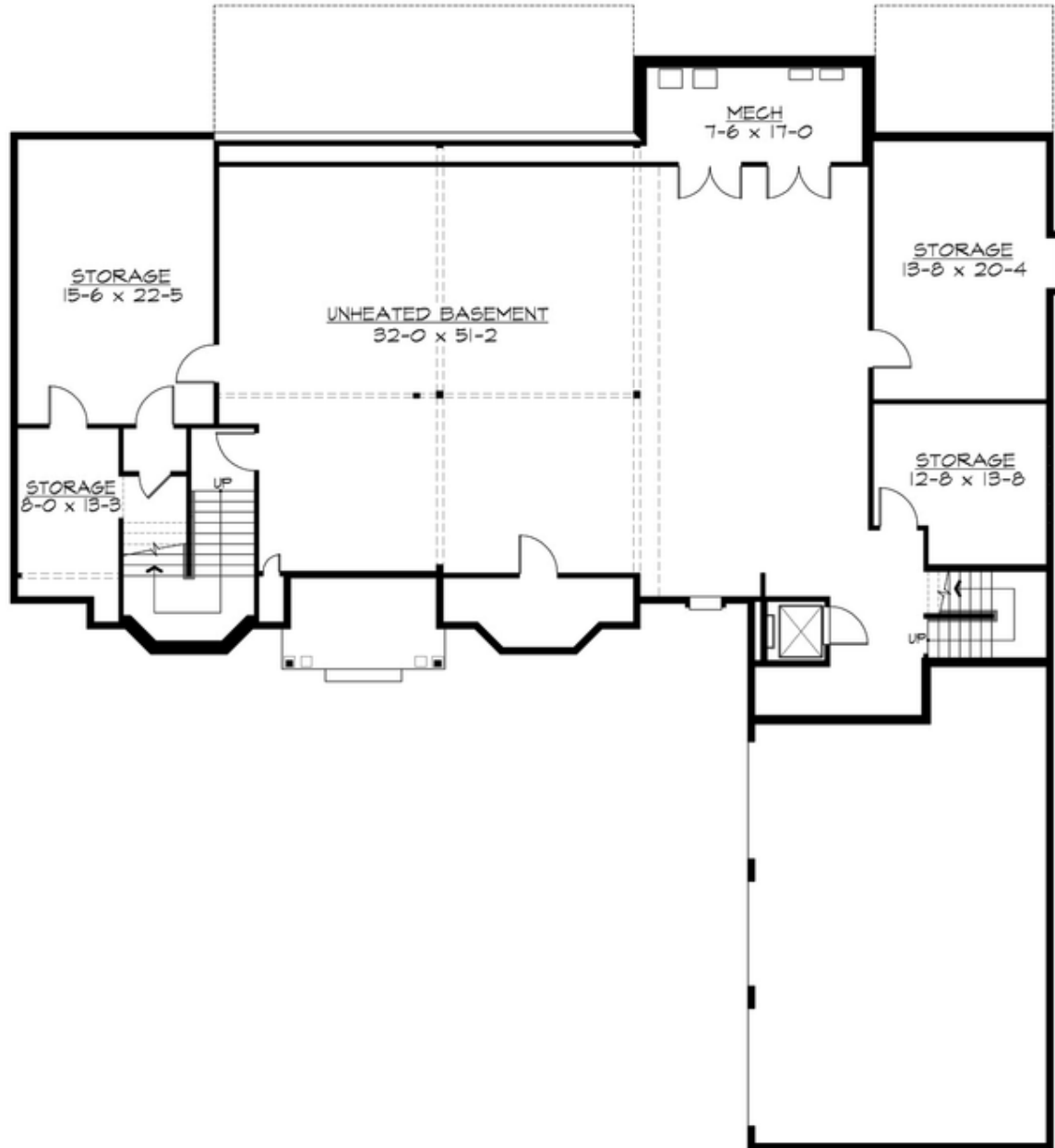
CAMBRIDGE - PLAN M6804A3S-0FB

UPPER FLOOR



CAMBRIDGE - PLAN M6804A3S-0FB

LOWER FLOOR





CAMBRIDGE - PLAN M6804A3S-0FB

PLAN DETAILS

Area Summary

Total Area:	6820 sq. ft.
Main Floor:	3386 sq. ft.
Upper Floor:	3434 sq. ft.
Lower Floor:	3411 sq. ft.
Garage Floor:	867 sq. ft.

General Information

Stories:	3
Width:	82'-0"
Depth:	90'-0"
Height:	28'-0"

Architectural Style

Colonial
Hampton
Traditional

Number of Rooms

Bedrooms:	5
Full Baths:	5
Half Baths:	3

Garage

Garage Size:	3
Garage Door Location:	Side

Roof Pitches

Primary:	8:12
Secondary:	6:12

Wall Heights

Main:	10'-0"
Upper:	9'-0"
Lower:	8'-0"

Foundation Type

Cellar Basement

Roof Framing

Combination

Floor Load

Live (lbs):	40 PSF
Dead (lbs):	10 PSF

Roof Load

Live (lbs):	25 PSF
Dead (lbs):	15 PSF
Wind:	85 MPH

Design Features

- Bonus Space @ Main Floor & Upper Floor
- Den/Office
- Front Porch
- Great Room
- Laundry Room @ Upper Floor
- Luxury Plan
- Master Bedroom @ Upper Floor Rear
- View Lot - Rear
- Wide Lot