



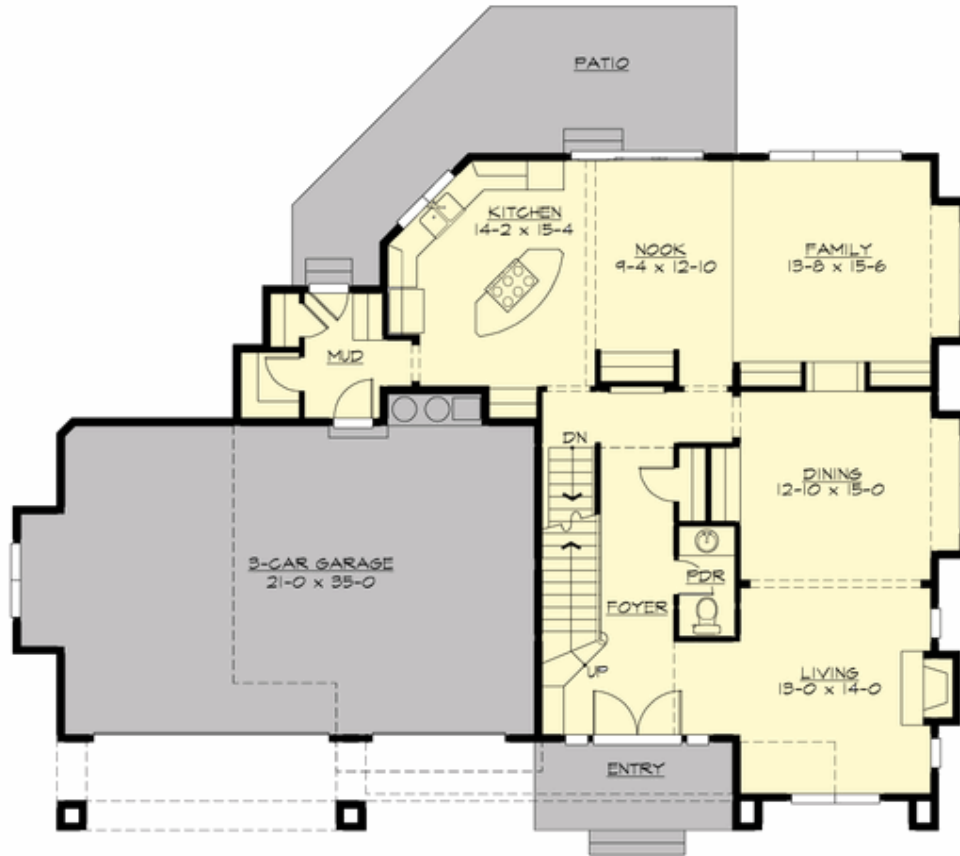
## MONDARIA - PLAN M3962A3F-0DB

Total Area: 4121 sq. ft.  
Garage Area: 748 sq. ft.  
Garage Area: 748 sq. ft.  
Garage Size: 3  
Stories: 3  
Bedrooms: 4  
Full Baths: 3  
Half Baths: 1  
Width: 65'-0"  
Depth: 46'-0"  
Height: 27'-3"  
Foundation: Daylight Basement



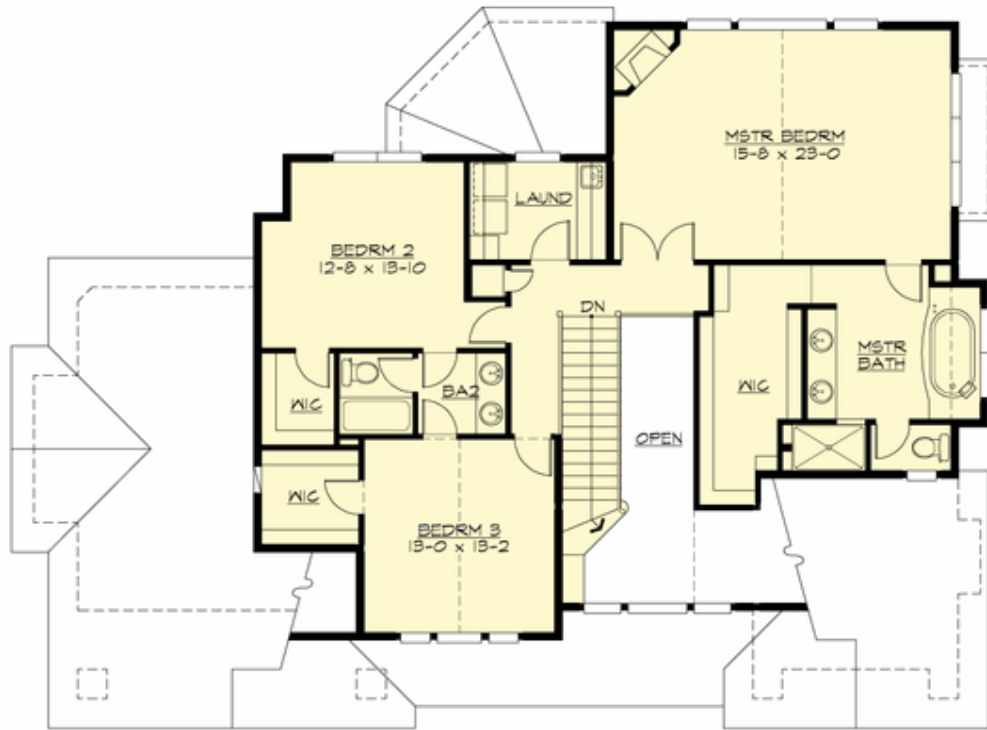
## MONDARIA - PLAN M3962A3F-0DB

### MAIN FLOOR



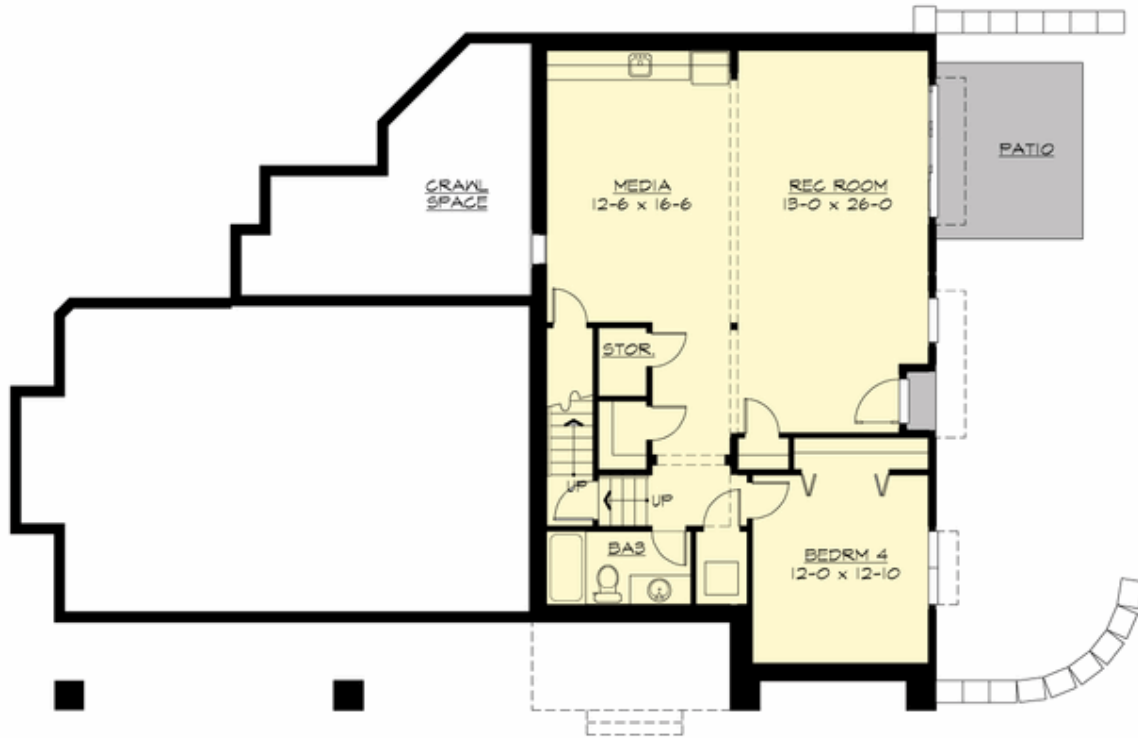
**MONDARIA - PLAN M3962A3F-0DB**

**UPPER FLOOR**



## MONDARIA - PLAN M3962A3F-0DB

### LOWER FLOOR





## MONDARIA - PLAN M3962A3F-0DB

### PLAN DETAILS

#### Area Summary

Total Area:	4121 sq. ft.
Main Floor:	1445 sq. ft.
Upper Floor:	1533 sq. ft.
Lower Floor:	1143 sq. ft.
Garage Floor:	748 sq. ft.

#### General Information

Stories:	3
Width:	65'-0"
Depth:	46'-0"
Height:	27'-3"

#### Architectural Style

Craftsman  
Northwest  
Shingle

#### Number of Rooms

Bedrooms:	4
Full Baths:	3
Half Baths:	1

#### Garage

Garage Size:	3
Garage Door Location:	Front

#### Roof Pitches

Primary:	6:12
Secondary:	5:12

#### Wall Heights

Main:	10'-0"
Upper:	9'-0"
Lower:	10'-0"

#### Foundation Type

Daylight Basement

#### Roof Framing

Combination

#### Floor Load

Live (lbs):	40 PSF
Dead (lbs):	10 PSF

#### Roof Load

Live (lbs):	25 PSF
Dead (lbs):	15 PSF
Wind:	85 MPH

#### Design Features

- Bonus Space @ Lower Floor
- Front Porch
- Laundry Room @ Upper Floor
- Living & Family Room
- Master Bedroom @ Upper Floor Rear