



MACMANUS - PLAN M4043A3F-0FB

Total Area: 6134 sq. ft.
Garage Area: 743 sq. ft.
Garage Area: 743 sq. ft.
Garage Size: 3
Stories: 3
Bedrooms: 6
Full Baths: 6
Half Baths: 1
Width: 67'-4"
Depth: 50'-6"
Height: 23'-6"
Foundation: Cellar Basement



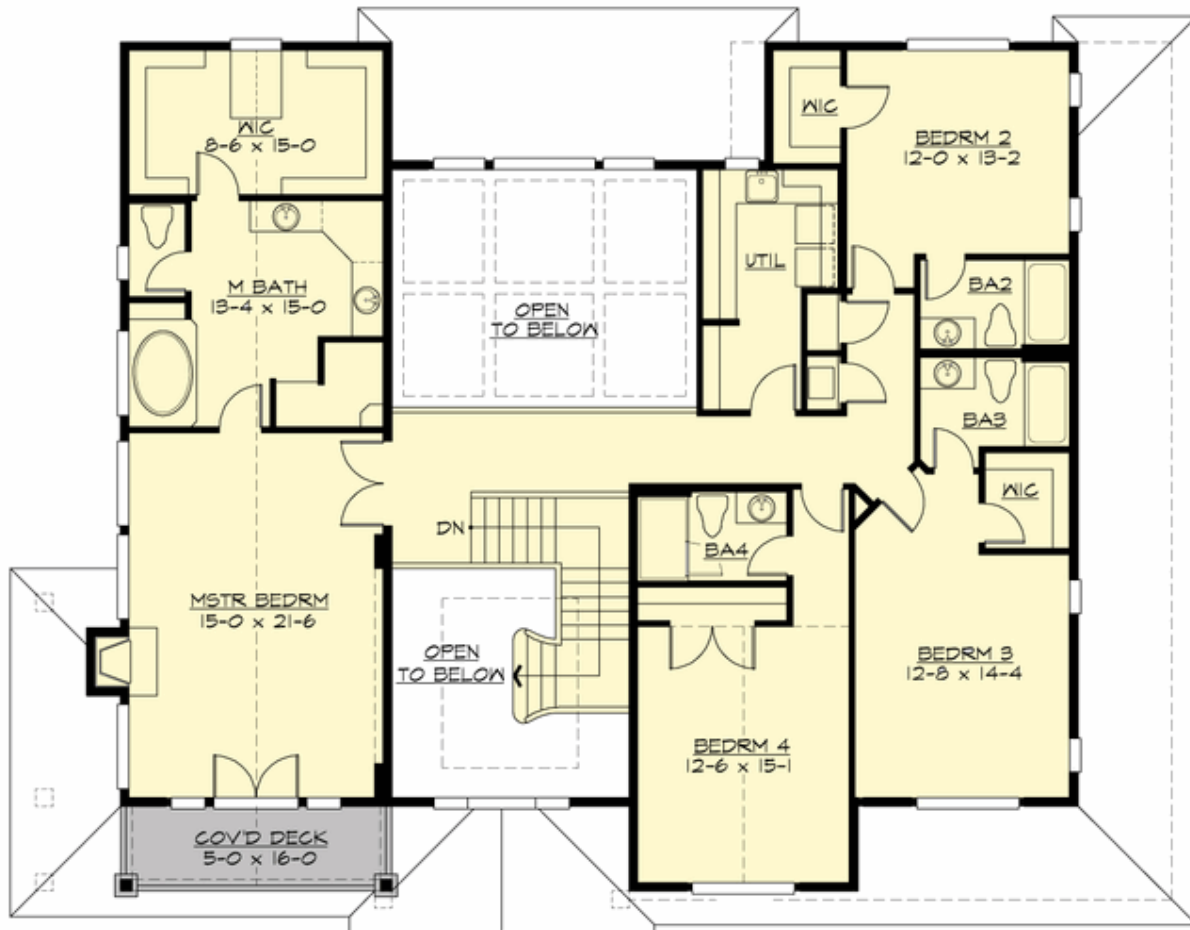
MACMANUS - PLAN M4043A3F-0FB

MAIN FLOOR



MACMANUS - PLAN M4043A3F-0FB

UPPER FLOOR



MACMANUS - PLAN M4043A3F-0FB

LOWER FLOOR





MACMANUS - PLAN M4043A3F-0FB

PLAN DETAILS

Area Summary

Total Area: 6134 sq. ft.
Main Floor: 2083 sq. ft.
Upper Floor: 1960 sq. ft.
Lower Floor: 2091 sq. ft.
Garage Floor: 743 sq. ft.

General Information

Stories: 3
Width: 67'-4"
Depth: 50'-6"
Height: 23'-6"

Architectural Style

Craftsman
Lodge
Northwest

Number of Rooms

Bedrooms: 6
Full Baths: 6
Half Baths: 1

Garage

Garage Size: 3
Garage Door Location: Front

Roof Pitches

Primary: 5:12
Secondary: 3:12

Wall Heights

Main: 9'-0"
Upper: 8'-0"
Lower: 9'-0"

Foundation Type

Cellar Basement

Roof Framing

Trusses

Floor Load

Live (lbs): 40 PSF
Dead (lbs): 10 PSF

Roof Load

Live (lbs): 25 PSF
Dead (lbs): 15 PSF
Wind: 85 MPH

Design Features

- Bonus Space @ Lower Floor
- Front and Rear Porch
- Great Room
- Laundry Room @ Main & Upper Floor
- Master Bedroom @ Upper Floor Front
- View Lot - Front
- Wide Lot