

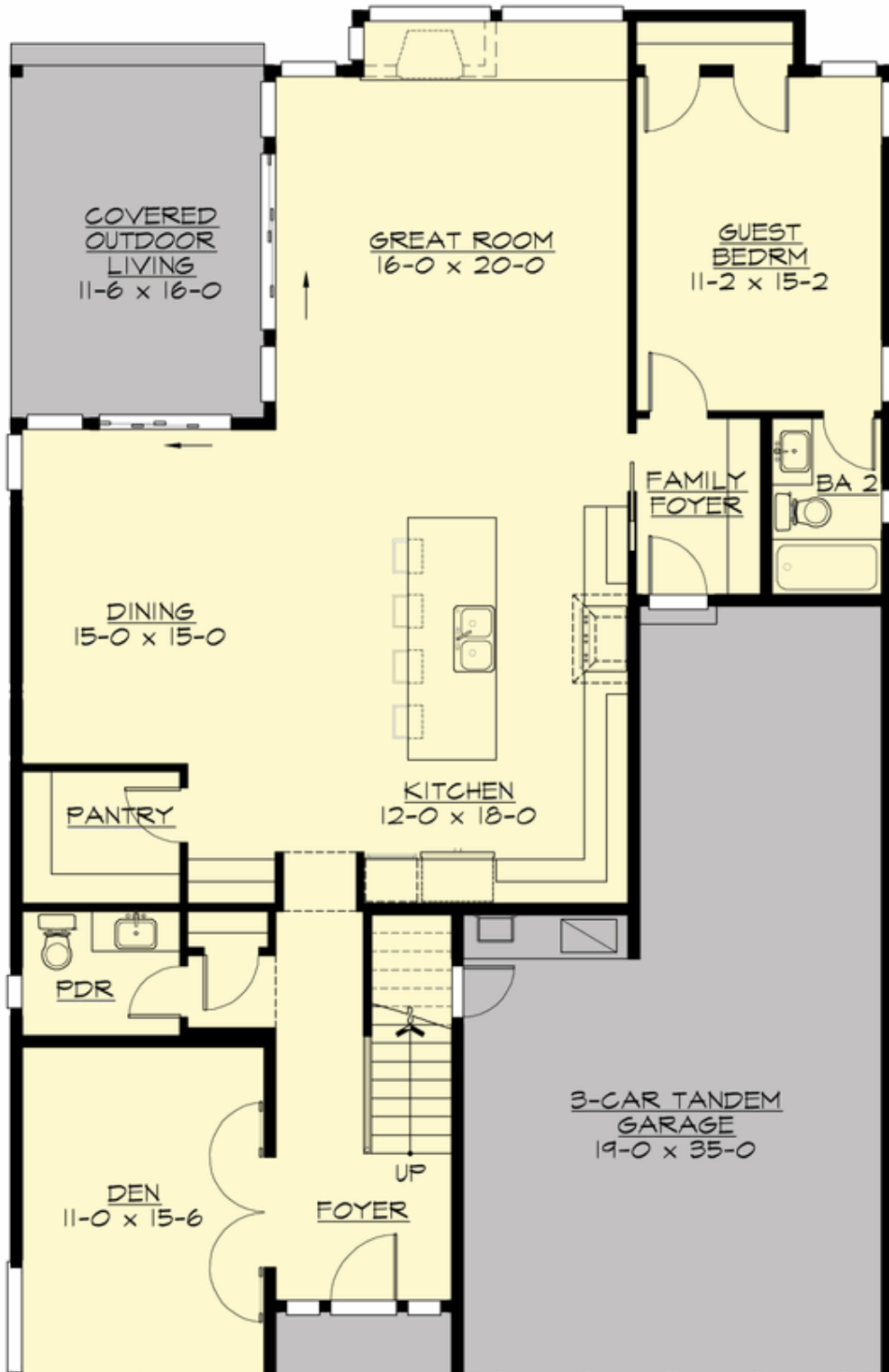
WISTI - PLAN M3640A3FT-0

Total Area: 3640 sq. ft.
Garage Area: 610 sq. ft.
Garage Area: 610 sq. ft.
Garage Size: 3
Stories: 2
Bedrooms: 5
Full Baths: 3
Half Baths: 1
Width: 40'-0"
Depth: 69'-0"
Height: 26'-0"
Foundation: Crawl Space

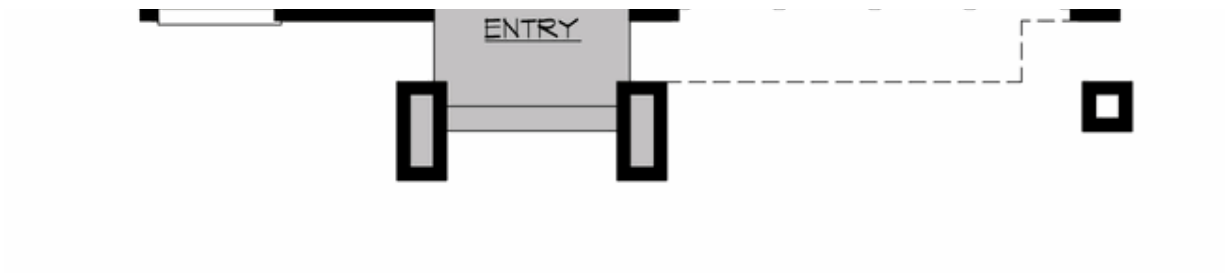


WISTI - PLAN M3640A3FT-0

MAIN FLOOR

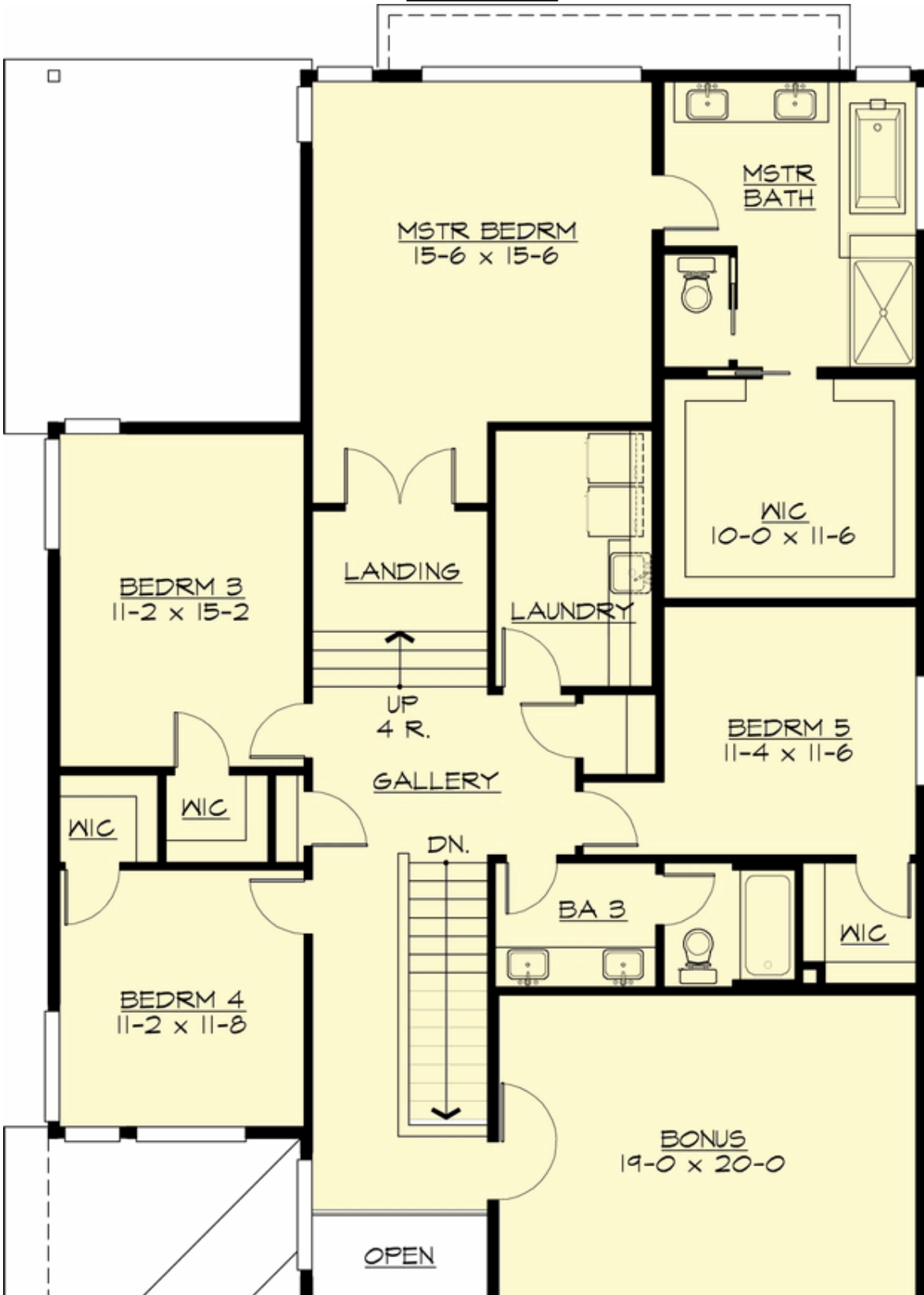


COPYRIGHT NOTICE: It is illegal to build this plan without a legally obtained set of prints. It is illegal to copy or redraw these plans. Violation of U.S. Copyright Laws are punishable with fines up to \$150,000. After the purchase of plans, changes may be made by a qualified professional.

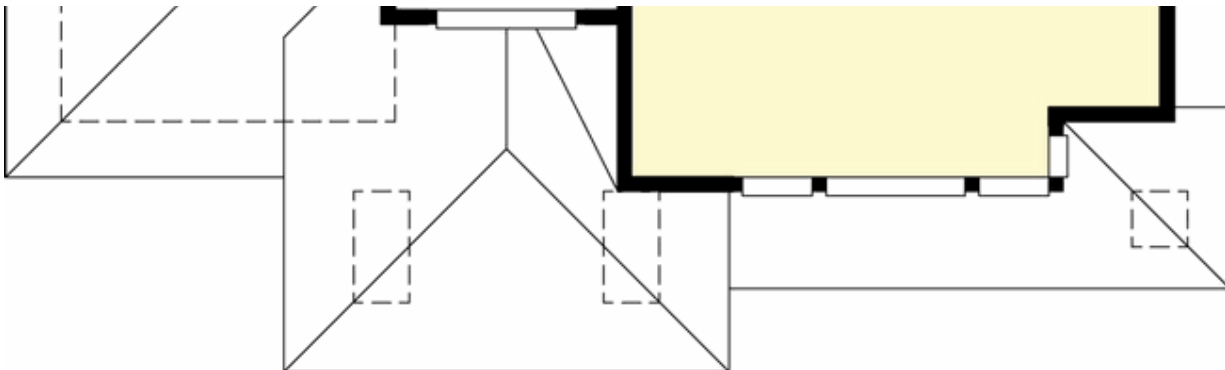


WISTI - PLAN M3640A3FT-0

UPPER FLOOR



COPYRIGHT NOTICE: It is illegal to build this plan without a legally obtained set of prints. It is illegal to copy or redraw these plans. Violation of U.S. Copyright Laws are punishable with fines up to \$150,000. After the purchase of plans, changes may be made by a qualified professional.





WISTI - PLAN M3640A3FT-0

PLAN DETAILS

Area Summary

Total Area: 3640 sq. ft.
Main Floor: 1632 sq. ft.
Upper Floor: 2008 sq. ft.
Garage Floor: 610 sq. ft.

General Information

Stories: 2
Width: 40'-0"
Depth: 69'-0"
Height: 26'-0"

Architectural Style

Contemporary
Modern
Prarie

Number of Rooms

Bedrooms: 5
Full Baths: 3
Half Baths: 1

Garage

Garage Size: 3
Garage Door Location: Front
Garage Type: Tandem

Roof Pitches

Primary: 4:12
Secondary: 3:12

Wall Heights

Main: 9'-0"
Upper: 8'-0"

Foundation Type

Crawl Space

Roof Framing

Trusses

Floor Load

Live (lbs): 40 PSF
Dead (lbs): 10 PSF

Roof Load

Live (lbs): 25 PSF
Dead (lbs): 15 PSF
Wind: 85 MPH

Design Features

- Bonus Space @ Upper Floor
- Den/Office
- Great Room
- Laundry Room @ Upper Floor
- Master Bedroom @ Upper Floor Rear
- Narrow Lot
- Rear Porch
- View Lot - Rear