



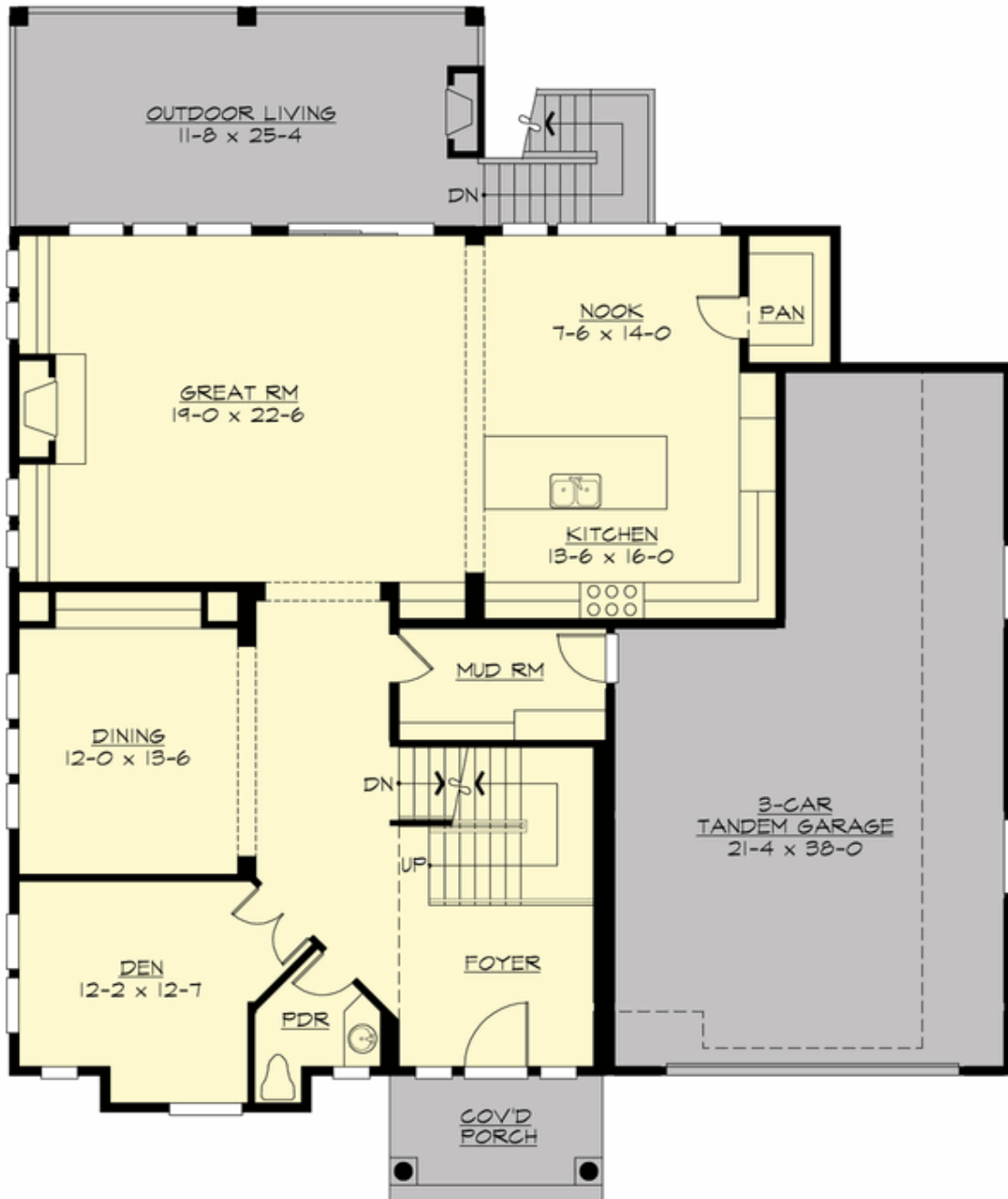
## PRIMROSE - PLAN M3652A3FT-0DB

Total Area: 5022 sq. ft.  
Garage Area: 715 sq. ft.  
Garage Area: 715 sq. ft.  
Garage Size: 3  
Stories: 3  
Bedrooms: 5  
Full Baths: 4  
Half Baths: 1  
Width: 55'-0"  
Depth: 64'-6"  
Height: 28'-6"  
Foundation: Daylight Basement



## PRIMROSE - PLAN M3652A3FT-0DB

### MAIN FLOOR



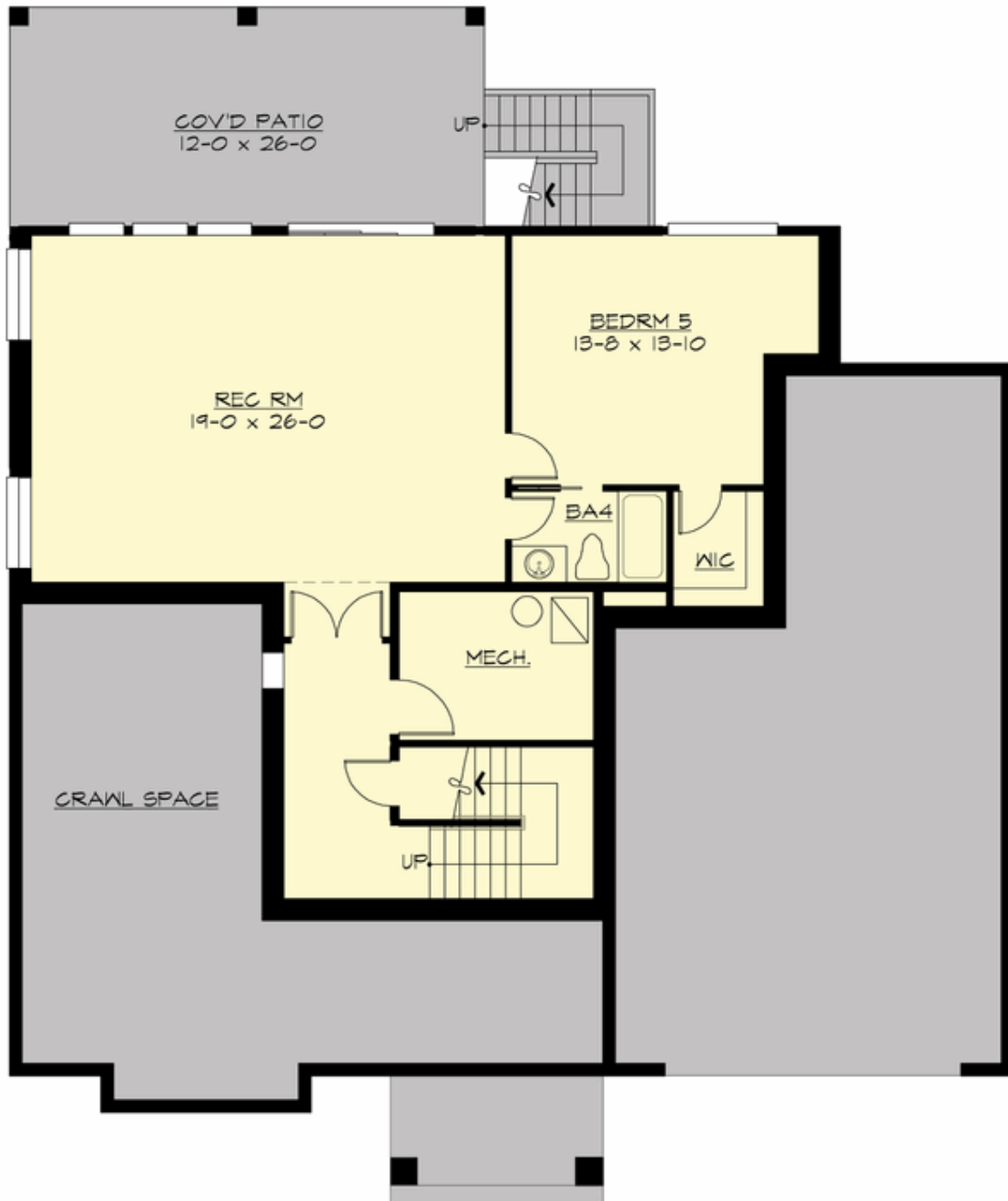
## PRIMROSE - PLAN M3652A3FT-0DB

### UPPER FLOOR



## PRIMROSE - PLAN M3652A3FT-0DB

### LOWER FLOOR





## PRIMROSE - PLAN M3652A3FT-0DB

### PLAN DETAILS

#### Area Summary

Total Area:	5022 sq. ft.
Main Floor:	1795 sq. ft.
Upper Floor:	1857 sq. ft.
Lower Floor:	1370 sq. ft.
Garage Floor:	715 sq. ft.

#### General Information

Stories:	3
Width:	55'-0"
Depth:	64'-6"
Height:	28'-6"

#### Architectural Style

Craftsman  
Northwest  
Shingle

#### Number of Rooms

Bedrooms:	5
Full Baths:	4
Half Baths:	1

#### Garage

Garage Size:	3
Garage Door Location:	Front
Garage Type:	Tandem

#### Roof Pitches

Primary:	6:12
----------	------

#### Wall Heights

Main:	9'-0"
Upper:	9'-0"
3rd Floor:	0'-0"
Lower:	9'-0"

#### Foundation Type

Daylight Basement

#### Roof Framing

Trusses

#### Floor Load

Live (lbs):	40 PSF
Dead (lbs):	10 PSF

#### Roof Load

Live (lbs):	25 PSF
Dead (lbs):	15 PSF
Wind:	85 MPH

#### Design Features

- Bonus Space @ Lower Floor
- Den/Office
- Front and Rear Porch
- Great Room
- Laundry Room @ Upper Floor
- Master Bedroom @ Upper Floor Rear
- View Lot - Rear